

METAmessage Emergency Communications

METAmessage Emergency Communications features let you automatically update PIN addresses on all of your BlackBerry handhelds, blast messages to groups, archive PIN/SMS messages and store and update plans and emergency documents on handhelds. And, the Emergency Gateway maintains BlackBerry access to vital documents and data in the event of a loss of network infrastructure.

METAmessage Emergency Communications maximizes the value of your BlackBerry deployment by enabling handhelds to act as emergency communication devices by working with BlackBerry technology to enable effective PIN-to-PIN communications and by letting handhelds store vital documents on the handheld itself for immediate access regardless of the status of the wireless network.

- Ensures emergency communications by automatically updating PIN addresses and letting administrators blast PIN-to-PIN messages to distribution lists. Administrators can turn on PIN-to-PIN/SMS messaging where full archiving of communications is required.
- Provides access to the latest emergency documents directly on user handhelds. Regardless of network coverage, users can read emergency procedures, contact information, etc.
- Allows for access to vital information even when network infrastructure is down. The Emergency Gateway immediately enables PIN-to-PIN communications with your information sources.

MOBILIZE YOUR
ENTERPRISE OPERATIONS

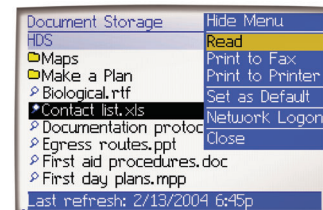
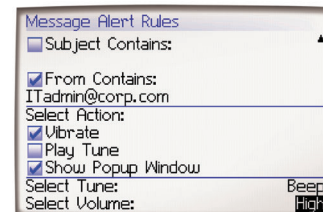
Continuity of Operations Plan (COOP)

Onset Technology

1-877-847-8329 / (831) 471-1360

www.onsettechnology.com

salesinfo@onsettechnology.com



Vertical Specialization:

- Government
- Law Enforcement/Public Safety
- Legal

Target Market Segment:

- Enterprise
- Government

METAmessage
for Wireless