



## BlackBerry® 8707v™ Modem Setup Instructions

## Welcome

Thank you for selecting the BlackBerry® 8707v™ from Vodafone. To ensure you experience the enhanced functionality that this unique device offers and the benefits it will deliver to your working life, go to the website link below and configure your device for use as a modem.

Using your device as a modem means that you will be able to access the internet, send and receive emails, and access your company's servers & databases from your laptop computer. Please follow the instructions on the website and within minutes you will be connected to the Vodafone 3G network and ready to experience the convenience and freedom of BlackBerry from Vodafone.

## Modem Set Up - Using the BlackBerry 8707v as a Dial-Up Modem

### 1. Install Desktop Manager

Prior to configuring your Dial-Up Networking to use the device, RIM's Desktop Manager must be installed. Follow the on screen instructions during the install, and ensure that the device is connected via USB after the install process has taken place.

Also - Prior to configuring Dial-Up Networking, ensure that Desktop Manager is running, and is connected to the device. You will be prompted for a password, if your device is password protected.

### 2. Check the virtual 'COM' ports assigned to your BlackBerry 8707v

#### 2.1 Control Panel

- ❏ Double click 'My Computer', then double click 'Control Panel'
- ❏ Double click 'System', as shown:



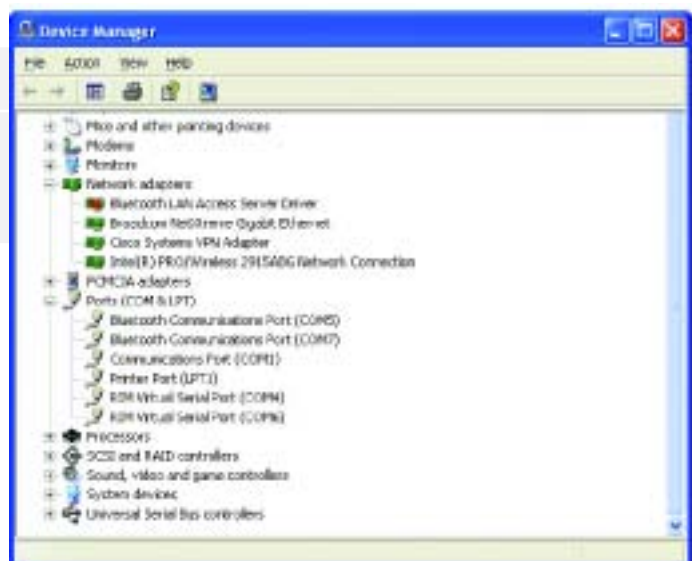
## 2.2 System Properties

- From the 'System' Window, select the 'Hardware' tab, as shown, then click on 'Device Manager':



## 2.3 Device Manager

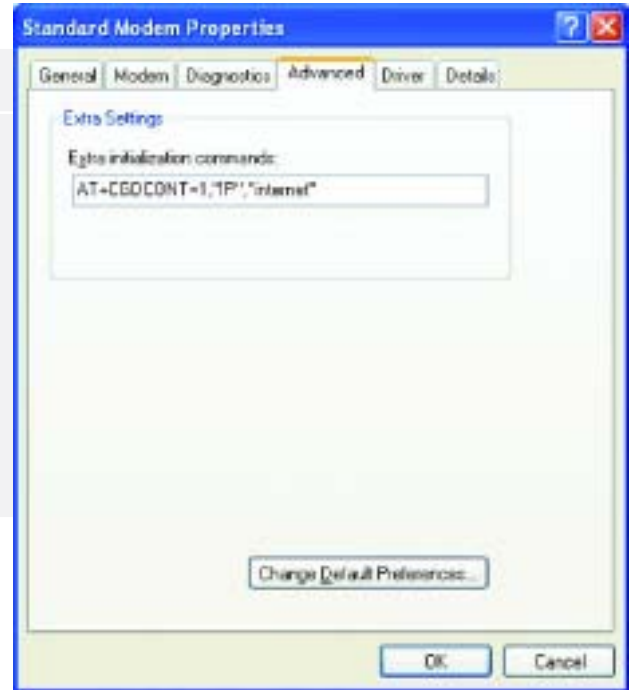
- Ensure that you can see 'RIM Virtual Serial Ports' when expanding the 'Ports' line:



## 3. Configure the Modem Settings

### 3.1 Standard Modem Properties

- Expand the 'Modems' Line, and double click the 'Standard Modem' option:
- In the 'Properties' window, select the 'Advanced' tab, and add AT+CGDCONT=1,"IP","xxx", where xxx is the apn for internet access on the network you are using (the apn is "internet" for Vodafone UK, as shown here):
- Click OK to save these settings.



## 4. Configure 'Dial-Up Networking'

### 4.1 Control Panel

- Return to the control panel, and double click 'Network Connections':



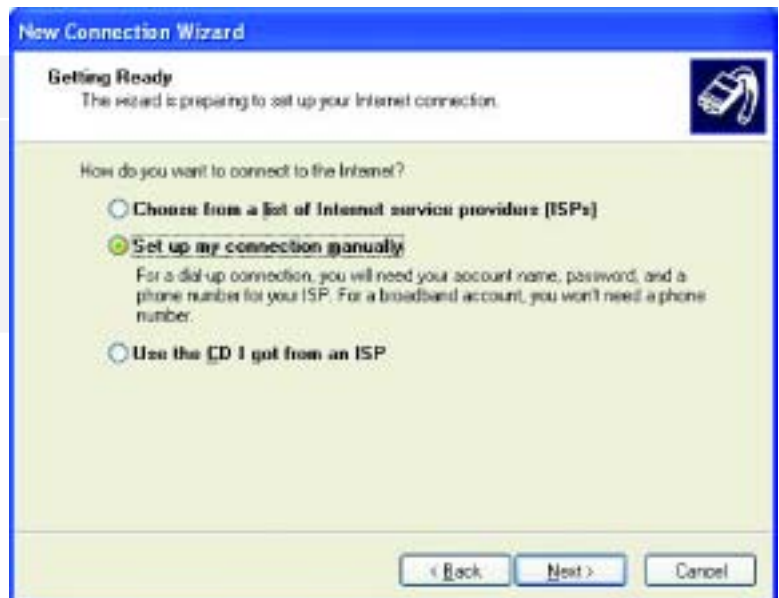
## 4.2 New Connection Type

- Select 'Create a New Connection' from the options on the left. The following Wizard will appear:
- Click Next
- You will now be prompted for Network Connection Type
- Select 'Connect to the Internet'
- Click Next



## 4.3 Internet Set-Up

- Select 'Set up my connection manually'
- Click Next



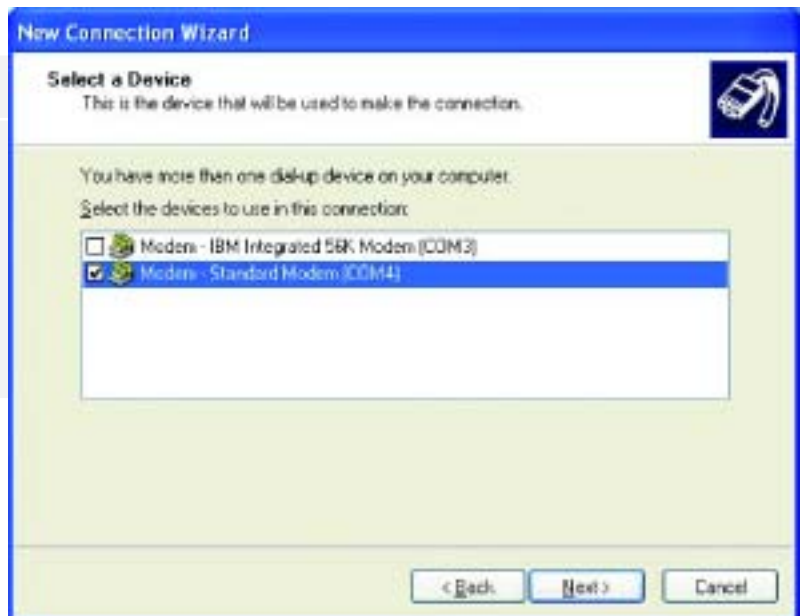
## 4.4 Internet Connection

- Select 'Connect using a dial-up modem'
- Click Next



## 4.5 Select a Device

- Check the tick box next to the Standard Modem that is on the 'COM' port relating to one of the virtual serial ports viewed earlier (at the beginning of section 2):
- Click Next



## 4.6 Connection Name

- Type a name for the device ('8707v IP Modem' has been used here)
- Click Next

The screenshot shows a 'New Connection Wizard' dialog box with a blue title bar. The main area is light green. At the top, it says 'Connection Name' and 'What is the name of the service that provides your Internet connection?'. Below this, it says 'Type the name of your ISP in the following box.' and 'ISP Name:'. A text input field contains '8707 IP Modem'. Below the field, it says 'The name you type here will be the name of the connection you are creating.' At the bottom, there are three buttons: '< Back', 'Next >', and 'Cancel'. A small icon of a mobile phone is in the top right corner.

## 4.7 ISP Details

- Enter \*99# as the dial up phone number
- Click Next

The screenshot shows a 'New Connection Wizard' dialog box with a blue title bar. The main area is light green. At the top, it says 'Phone Number to Dial' and 'What is your ISP's phone number?'. Below this, it says 'Type the phone number below.' and 'Phone number:'. A text input field contains '\*99#'. Below the field, it says 'You might need to include a "1" or the area code, or both. If you are not sure you need the extra numbers, dial the phone number on your telephone. If you hear a modem sound, the number dialed is correct.' At the bottom, there are three buttons: '< Back', 'Next >', and 'Cancel'. A small icon of a mobile phone is in the top right corner.

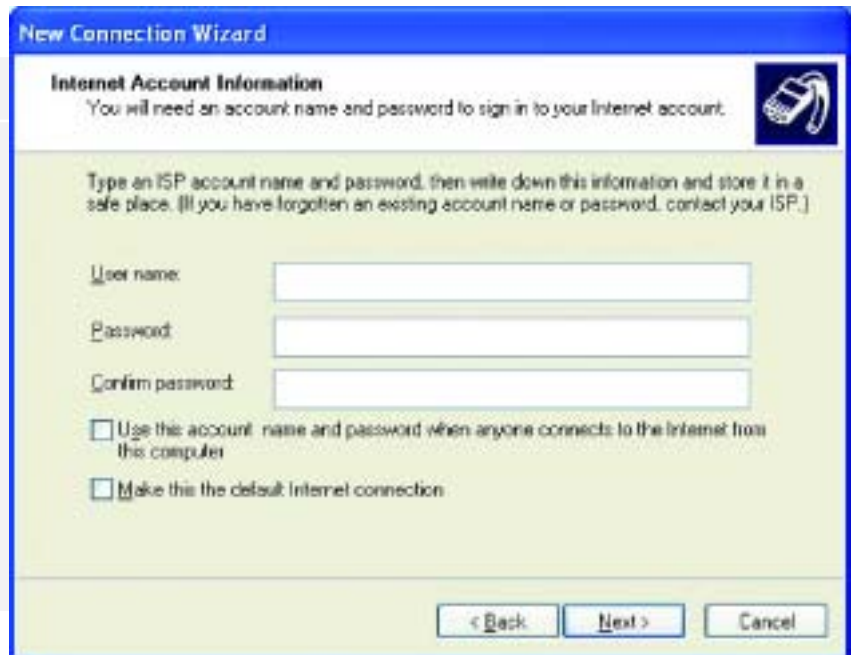
### 4.8 Connection Availability

- ❖ Choose whether the connection is to be for your logon, or for anybody's...
- ❖ Click Next



### 4.9 Internet Account

- ❖ Enter a username and password if required (this will be provided by your network operator). In the case of Vodafone UK, this is blank (as shown)
- ❖ Select whether you would like to use this account for anyone connecting to the internet (not recommend)
- ❖ Select whether you would like this to be the default connection (not recommended)
- ❖ Click Next



## 4.10 New connection wizard

- Check tick box for Desktop shortcut if required (recommended)
- Click Finish
- Your PC should now be configured to use the BlackBerry 8707v as a modem



## 5. Connecting

### 5.1 Connecting the BlackBerry 8707v IP Modem

- Double click the shortcut on your desktop, or select Start, Settings, Network Connections, then BlackBerry 8707v IP Modem (name given during setup)
- Click 'Dial'
- You will now be connected



## 5.2 Device Display

- ❖ Your device display should look like this:
- ❖ Note the 'Modem Mode Enabled' indicator
- ❖ When you have finished your session, select the 'BlackBerry 8707v IP Modem' as per the beginning of step 5, and select 'Disconnect'.



## **About BlackBerry**

BlackBerry is an end-to-end solution developed by Research In Motion® Limited.

Founded in 1984, Research In Motion is a world leader in the wireless communications market.

## **For more information**

[www.blackberry.com/uk](http://www.blackberry.com/uk)

[europe@rim.com](mailto:europe@rim.com)