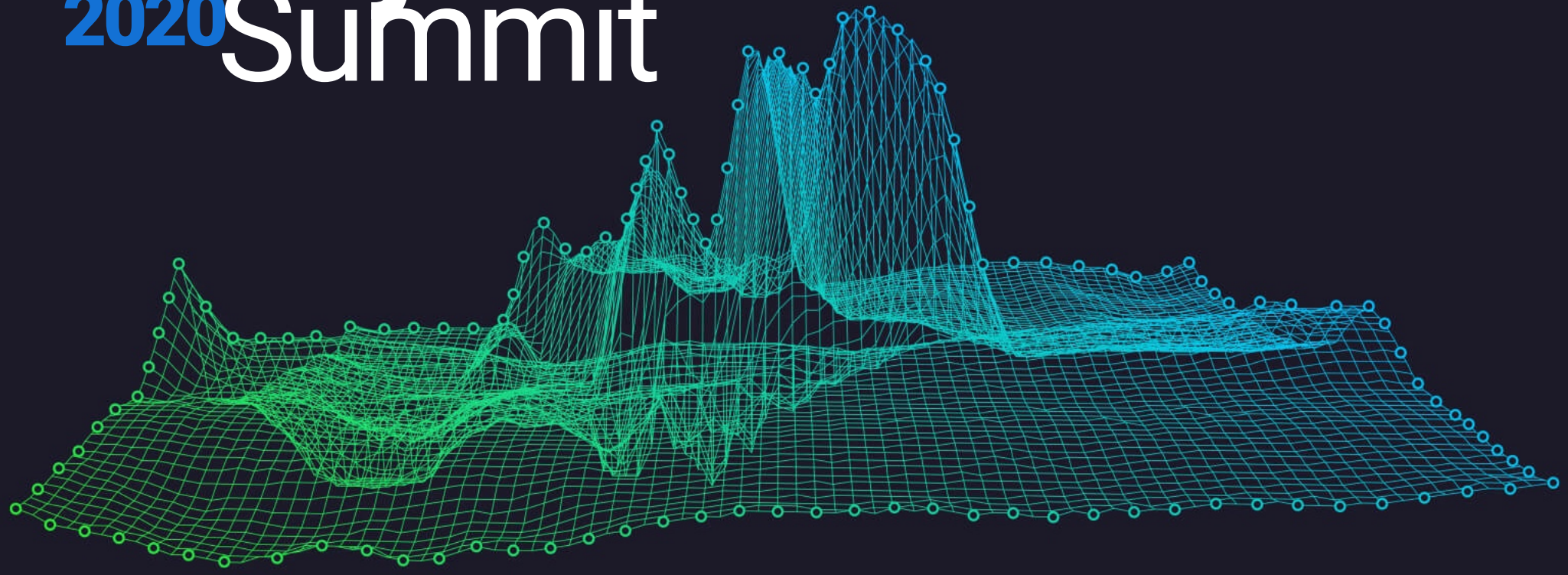


Analyst 2020 Summit



 **BlackBerry**® Intelligent Security. Everywhere.

Analyst 2020 Summit

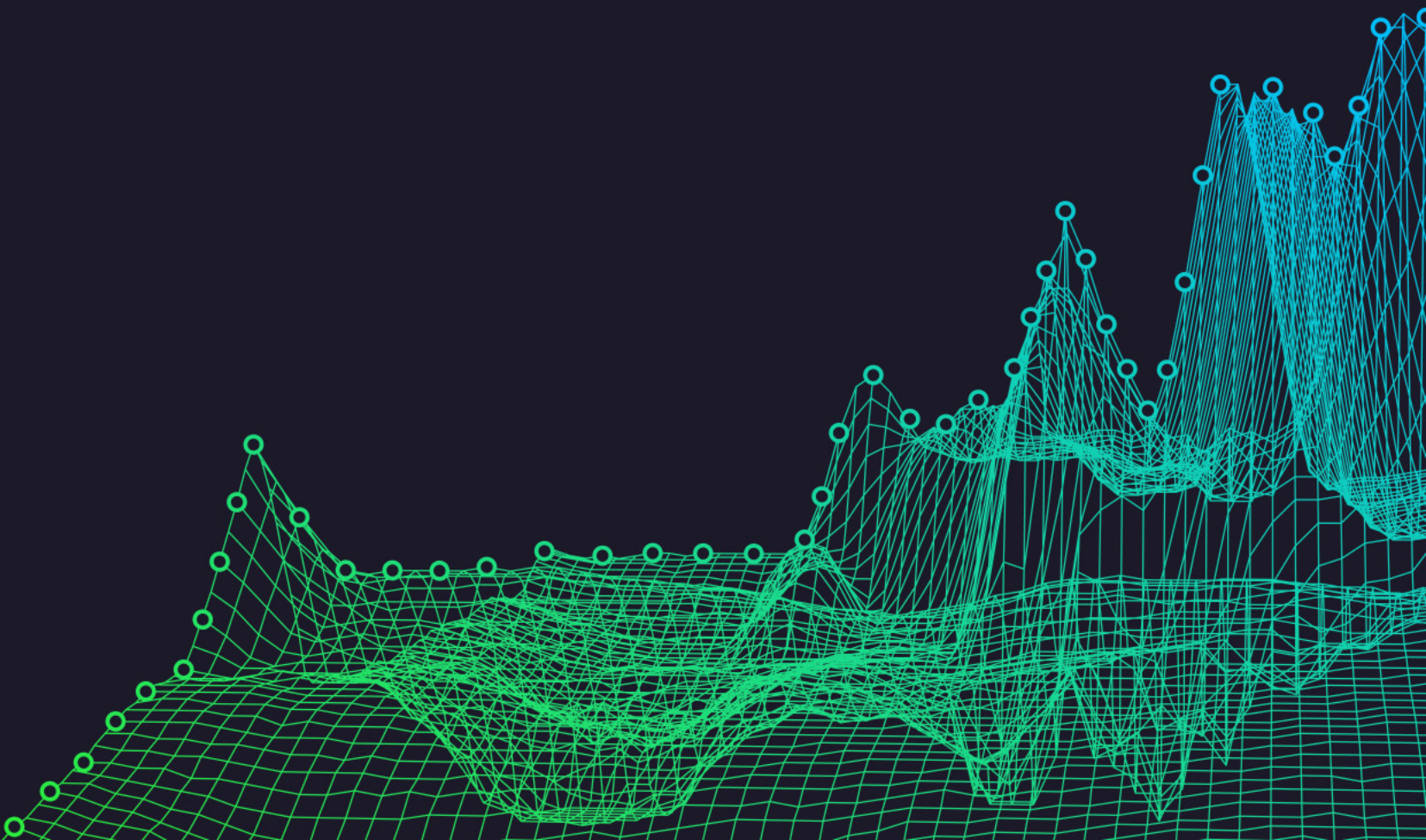
Opening Remarks

Mark Wilson

CMO

John McClurg

CISO



Agenda

11:00 am Opening Remarks
Mark Wilson &
John McClurg

11:10 am Protecting & Managing
Endpoints
Nigel Thompson

11:30 am Protecting People
Ramon J. Pinero
& David Wiseman

11:50 am Protecting Things
John Wall

12:10 pm Technology Platform
Eric Cornelius

12:30 pm Go-To-Market
David Castignola

12:45 pm Closing Remarks
John Chen

A world map with a dark blue background. Red circles of varying sizes are scattered across the map, representing the global impact of a pandemic. The circles are most concentrated in North America, Europe, and Asia. The map includes labels for continents and oceans in a light blue font. The text "Business Continuity during a Global Pandemic" is overlaid in the center in a large, white, sans-serif font.

Business Continuity during a Global Pandemic

ASIA

NORTH
AMERICA

EUROPE

AFRICA

SOUTH
AMERICA

AUSTRALIA

Indian
Ocean

North
Pacific
Ocean

North
Pacific
Ocean

North
Atlantic
Ocean

South
Pacific
Ocean

South
Atlantic
Ocean

I can't communicate with
my remote employees

Workers can't go to the
office

Phishing attacks are
increasing

Volume of threats

New threat surfaces with
mobile & IoT

CHAOS

The human factor

Complexity – number of
vendors & solutions

We don't have enough
laptops to send to users

Our VPNs are overloaded

I need to keep my
business running

Crisis communication for all
employees everywhere

Unified Endpoint Security &
Management for any device

Work remotely on any device –
personal or corporate owned

ORDER

Secure network access on a
BYOL without needing a VPN

Intelligent Security that reduces
friction and improves user
experience

Future proof platform that will
support the next generation of
endpoints



Business Continuity During Global Pandemic

Business Continuity

Business
Continuity



Business Continuity
Manager

Endpoint Security
& Management



CIO | CISO

Working From
Home



End User

During Global Pandemic



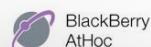
Centers for Disease Control and Prevention
Global Pandemic Notice

March 1, 2020 10:13 AM

**Warning - Level 3, Avoid Nonessential Travel—
Widespread Ongoing Transmission.**

Older adults and people of any age with serious chronic medical conditions are at increased risk for severe disease. There may be limited access to adequate medical care in affected areas.

...



California Department of Public Health
EXECUTIVE ORDER N-33-20

March 4, 2020 10:13 AM

The Director of the California Department of Public Health is ordering all individuals living in the State of California to stay home or at their place of residence, except as needed to maintain continuity of operation of the federal critical infrastructure sectors.

...



Business Continuity Plan

Crisis Communications System

Execute WFH Continuity Plan



InterCon Bank Inc.

Employee Welfare Check

March 1, 2020 10:13 AM

Your manager has started to make arrangements for you to travel back as soon as possible. We wish safe travels and speed during this pandemic.

How are you?

I am safe

I am not feeling safe

I am not in the affected area



Alert-32132114@athocalerts.com

Global Pandemic Notice



This message was sent with High importance.
If there are problems with how this message is displayed, click her to view it in a web browser.

Global Pandemic Notice

Severity: **High**

Type: **Other**

The Director of the California Department of Public Health is ordering all individuals living in the State of California to stay home or at their place of residence, except as needed to maintain continuity of operation of the federal critical infrastructure sectors.

All employees are instructed to work from home until further notice.

For more info, [click here](#).

Published on: 02/04/2020 15:54:01 (UTC-8:00) Pacific Time (US & Canada) By: Ken Tanaka.
Sent by AtHoc. To change your profile, add/delete contact numbers or email addresses, [click here](#)

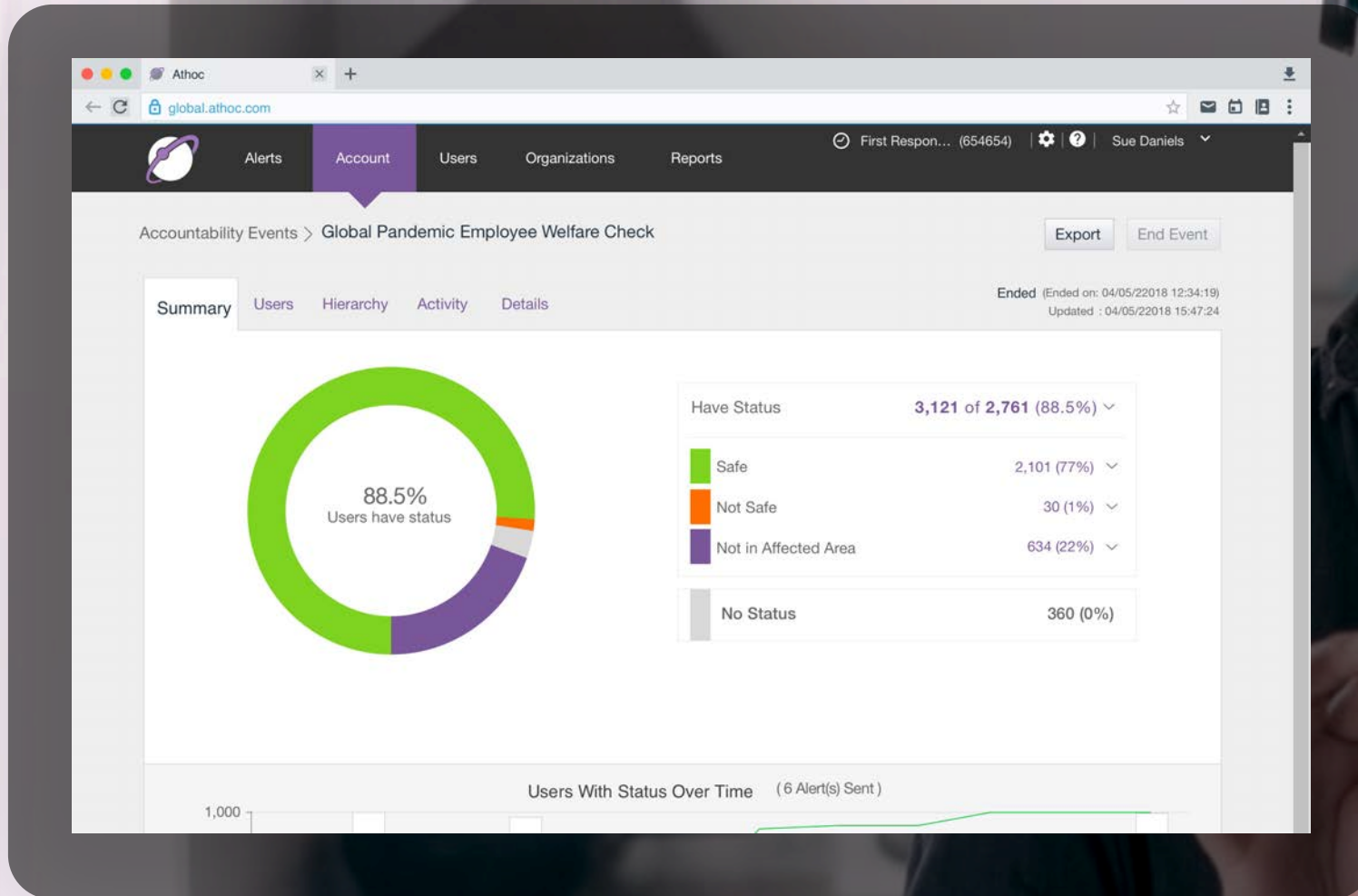
Copyright ©2020 BlackBerry Limited. All Rights Reserved.

Notify Employees at the Office

Check in with Remote Workers

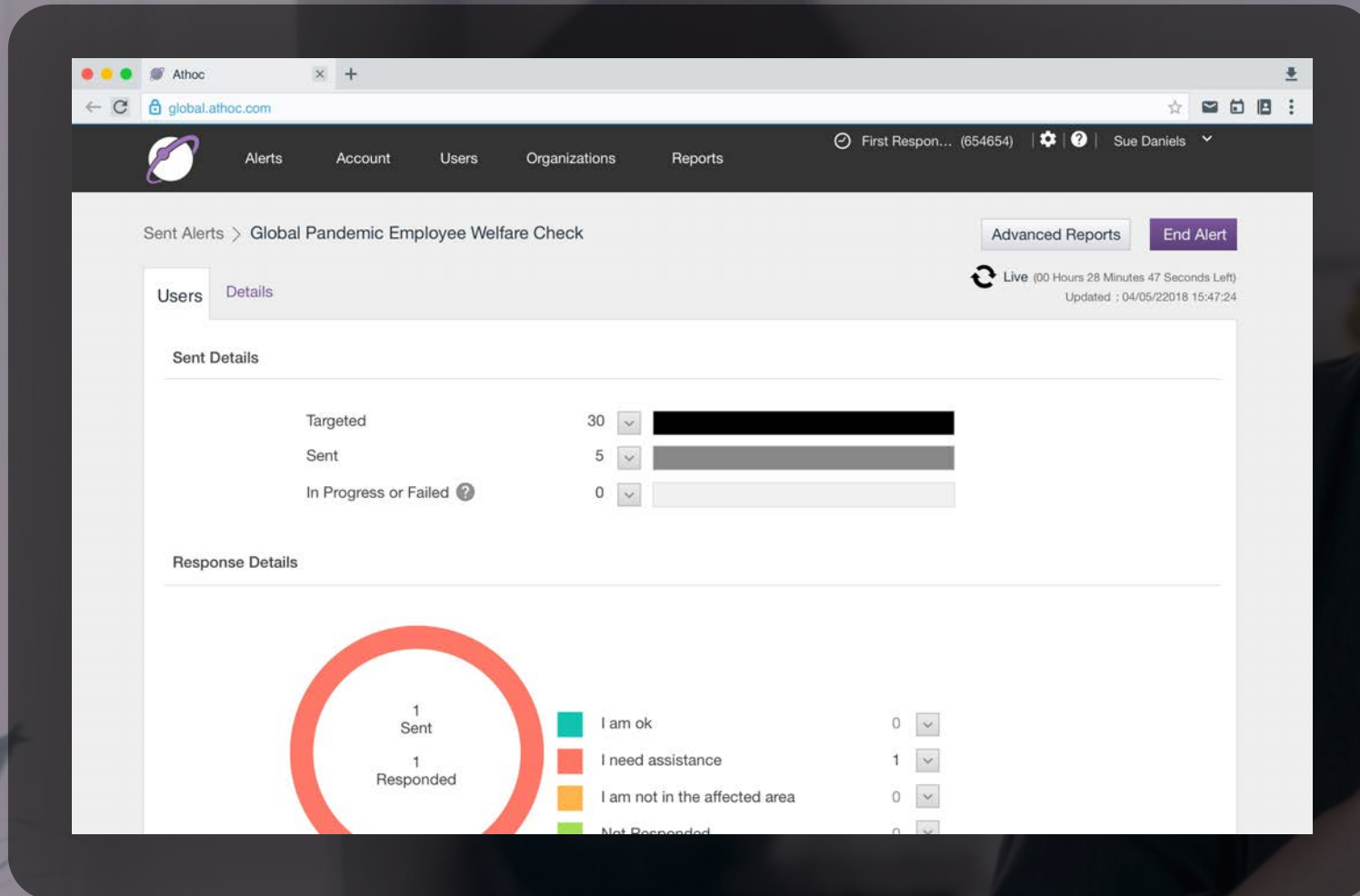
Reach 1000's Workers Globally

Email, Phone, SMS, App Alerts



Real Time Dashboard

Up to Date Employee Safety



Notify Workers of WFH Options

Entitle Access with UEM



InterCon Bank Inc.

Work Access Notification

March 5, 2020 10:13 AM



Work From Home Enabled

You've been entitled to work from home. Learn more details about how to access your company files and applications.

Secure Access to Work Apps

Corporate & Personal Devices

Business Continuity

Business
Continuity



Business Continuity
Manager

Endpoint Security
& Management



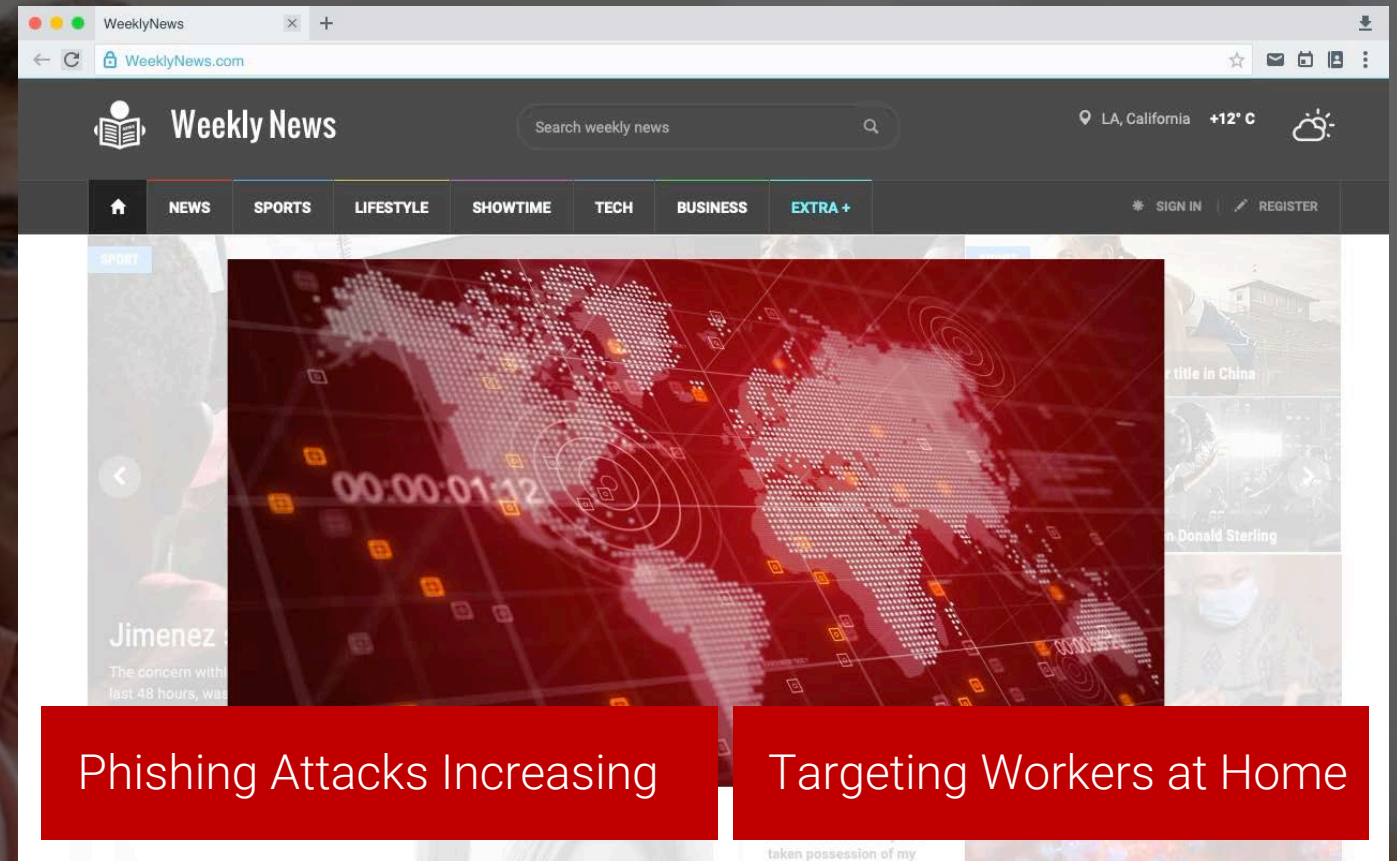
CIO | CISO

Working From
Home



End User

During Global Pandemic



Security Attacks Increasing

Targeting Corp & Personal Devices

Users on Home Networks

Unified Endpoint Security Console

Protecting Personal & Corp Device

AI Prevention Stopping 100% Phishing





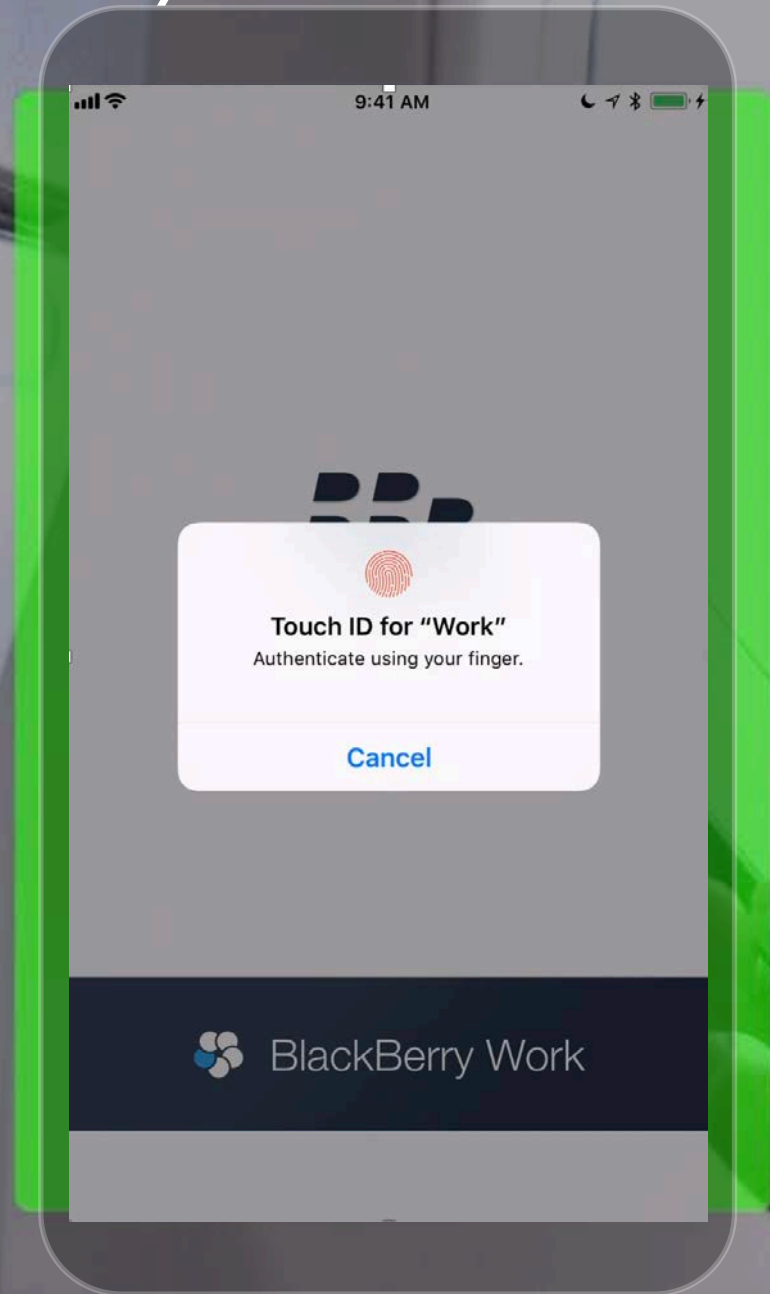
Endpoint Protection

Detection & Response



Mobile Threat Defense

Continuous Authentication



Intelligent Security

Multiple Telemetry Objects

AI Driven Risk Model

Adaptive Security Policies

Business Continuity

Business
Continuity



Business Continuity
Manager

Endpoint Security
& Management



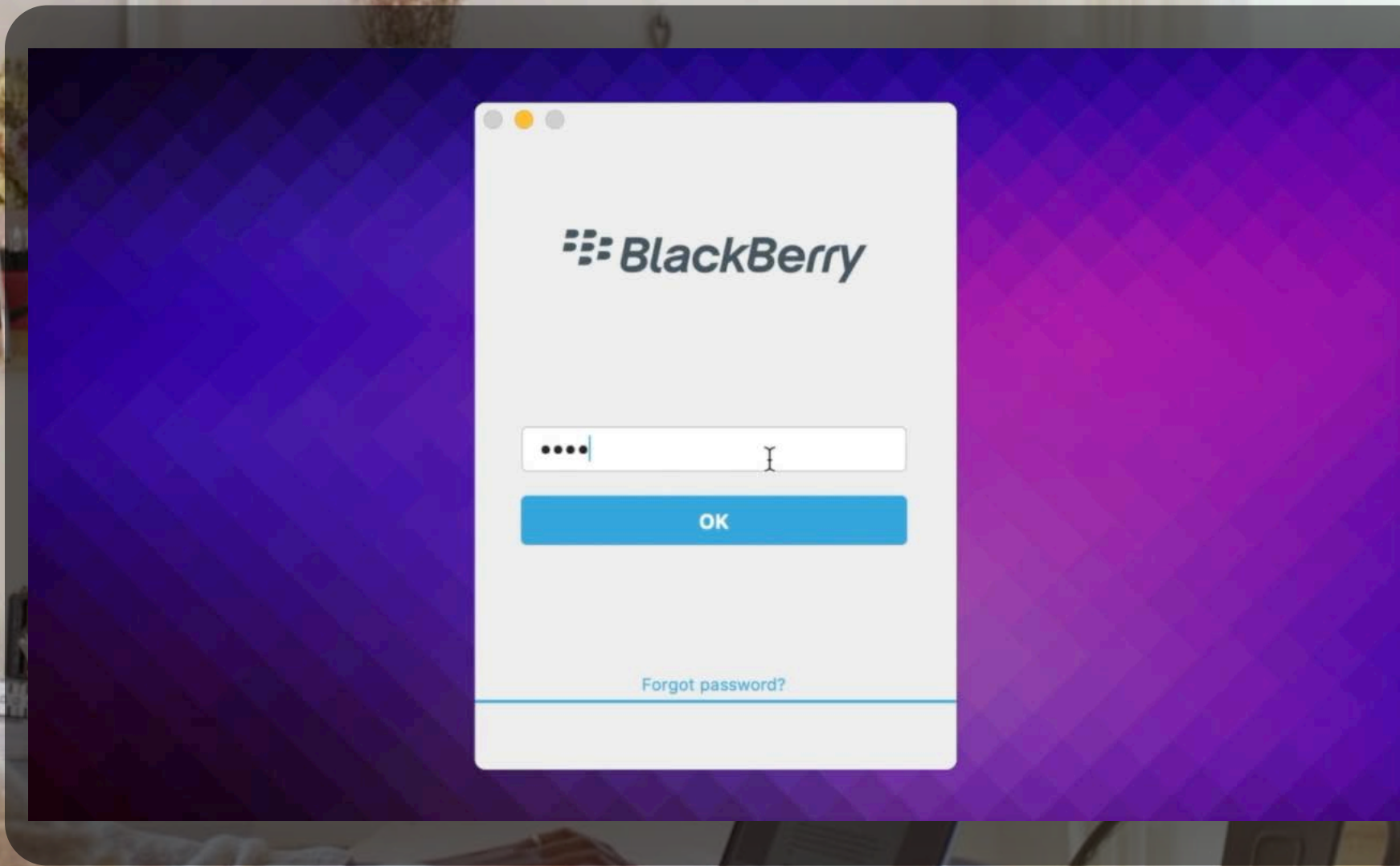
CIO | CISO

Working From
Home



End User

During Global Pandemic

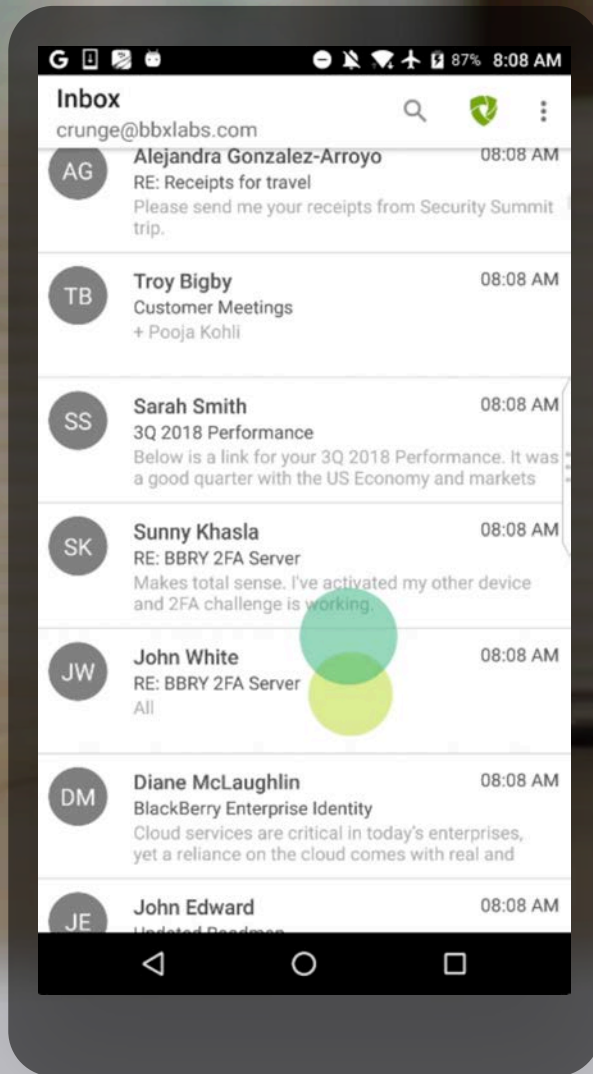


One Secure Application

Secure Documents

Secure Email & Calendar

Secure Intranet Access



Intelligent Security

User Behavioral Analytics

Continuous Authentication

The background of the slide is a photograph of a room. On the left, there is a window with light-colored vertical blinds. The floor is made of light-colored wood. On the right side of the frame, a portion of a dark-colored, cylindrical robot is visible. The overall lighting is soft and natural, coming from the window.

Security Everywhere

Autonomous Robots

Home Automation

The background of the slide is a composite image. It features a close-up of a hand holding a black smartphone. Overlaid on this are various digital and futuristic elements: glowing blue and green lines representing data or network connections, several circular icons with internal patterns, and a large, glowing blue structure on the right side that resembles a DNA double helix or a complex molecular model. The overall color palette is dark with vibrant blue and green highlights.

Protecting the Vehicle

Control & Safety Systems

Secure Connectivity

Analyst 2020 Summit

Unified Endpoint Management & Security

Nigel Thompson

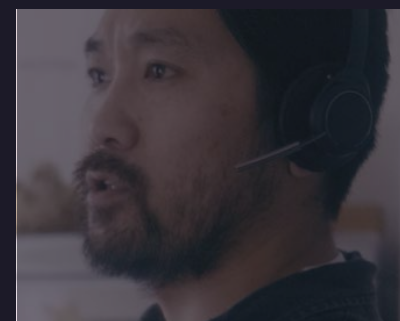
Vice President, Product Marketing,
BlackBerry Spark Division



Endpoint Security



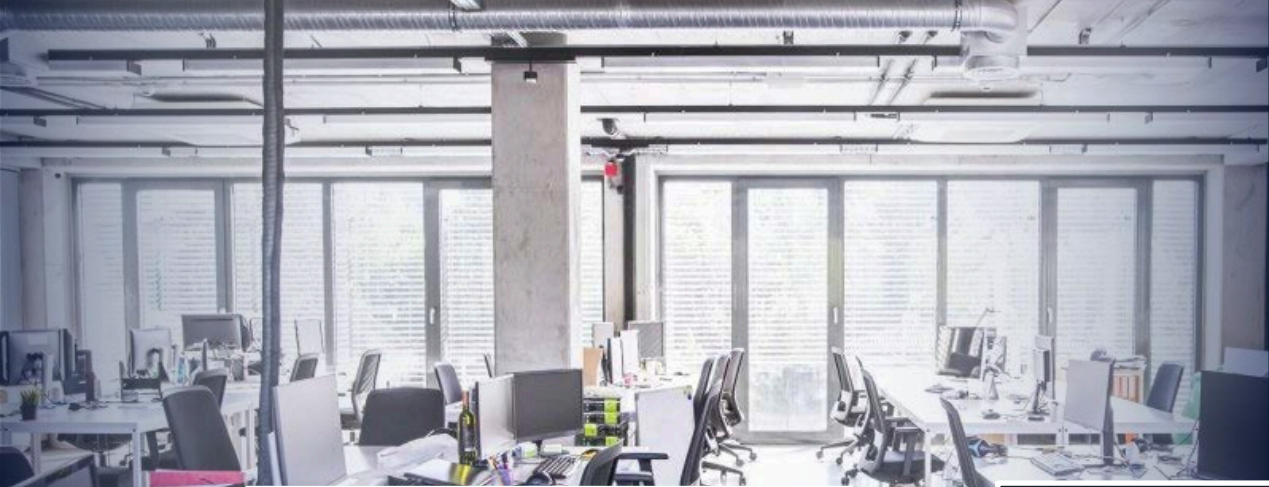
Endpoint Management



Crisis Communication



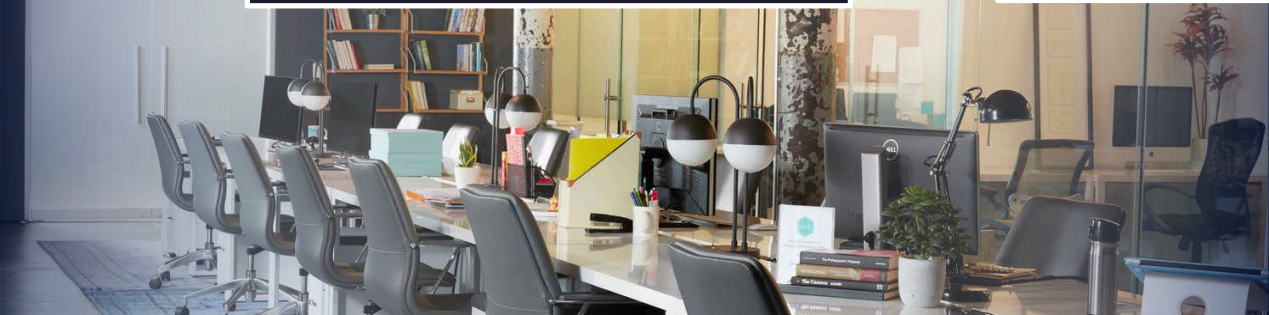
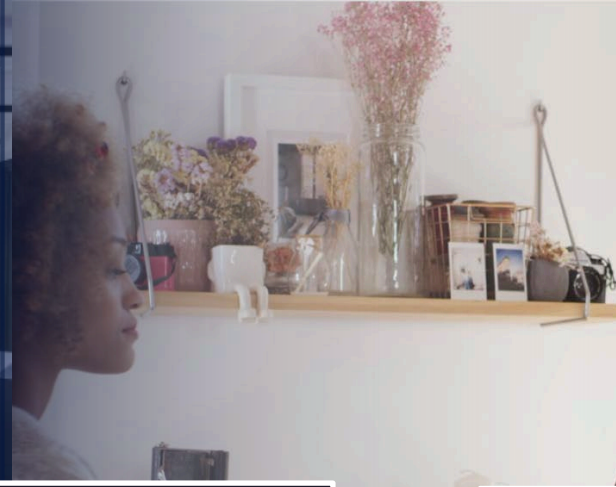
Embedded Systems



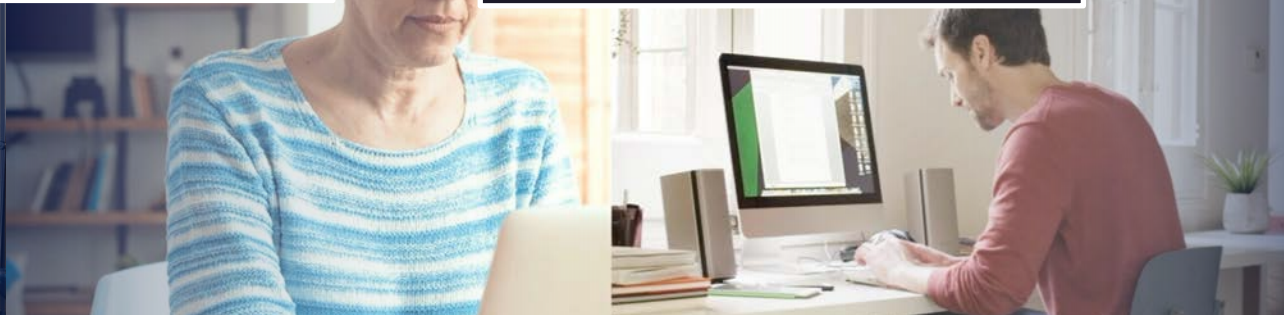
Business believe
that WFH will likely
be long term or
permanent

Increased attacks
targeting corporate
data on mobile &
personal devices
continues to grow

Increase demand
for products that
support & secure
unmanaged devices



Work from Office



Work from Home | Remote

The background is a collage of various office and home scenes. It includes people working at desks, a person looking out a window, a woman with short grey hair looking down, and various office supplies like paper boxes and a keyboard. The scenes are overlaid with semi-transparent blue boxes containing white text.

Mobile Device
Management &
Modern Management

Secure Network
Access & Secure Web
Gateway

Secure Email
Calendar, Web &
Secure Integration
with 3RD Party Apps

Endpoint Detection &
Response with
Intelligent Actions

AI Driven Endpoint
Protection & Mobile
Threat Defense

Advanced Data Loss
Protection & Data
Rights Management

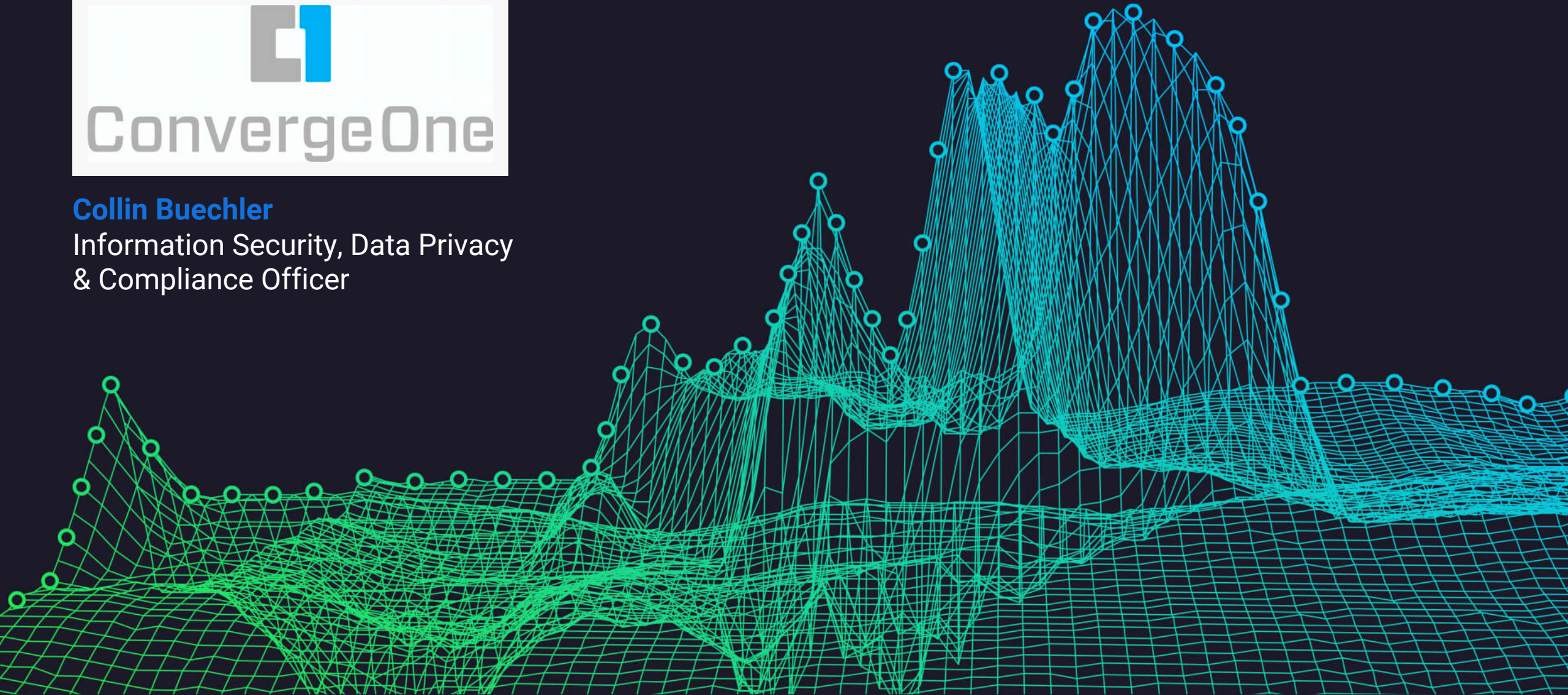
Corporate Mobile Devices

Personal Devices



Collin Buechler

Information Security, Data Privacy
& Compliance Officer





BlackBerry Spark

INTERACTION LAYER
APPS + AGENTS + CONSOLES + MICRO-SERVICES



Spark Suite

Unified Endpoint Security



Endpoint Protection



Endpoint Detection & Response



Mobile Threat Defense

Identity & Access Management

Unified Endpoint Management



Software Development Kit



Digital Rights Management



Identity

Coming Soon



Continuous Authentication



Data Loss Prevention



Secure Internet Gateway

UEM Express Suite



Device Management



Secure Productivity Apps



Microsoft Apps

CROWD-DRIVEN AI SECURITY LAYER

ENDPOINT MANAGEMENT LAYER



Cloud & On-Prem

Order is achieved through the BlackBerry's AI-powered Unified Endpoint Security Platform

Analyst 2020 Summit

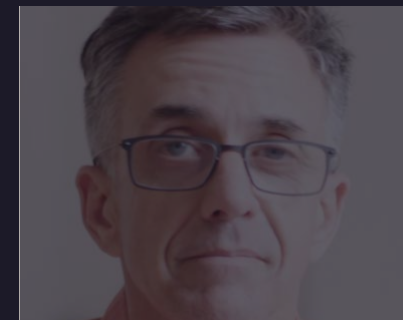
Protecting People

Ramon J. Pinero

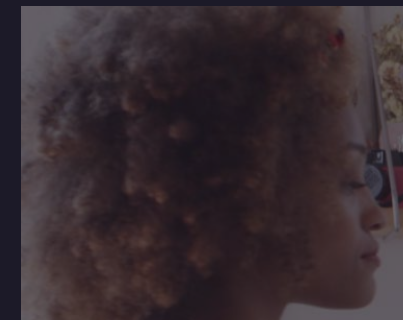
Vice President, Services,
BlackBerry AtHoc

David Wiseman

Vice President, Secure
Communications



Endpoint Security



Endpoint Management



Crisis Communication



Embedded Systems

SecuSuite

PROTECT MOBILE COMMUNICATIONS – VOICE AND MESSAGES

- Tapping of networks to capture content of calls and messages
- Identity spoofing and hijacking
- Loss of control and ownership of metadata

INNOVATION THIS YEAR

- Updated NIAP/CSfC – certifications with Top Secret usage crypto package
- Partnership CACI for US FedRAMP service – SteelBOX
- Enhanced messaging and PBX integration capabilities



BlackBerry® AtHoc®



Situation Response

Plan, respond, & collaborate



Alert

Notify anyone, anywhere, on any device



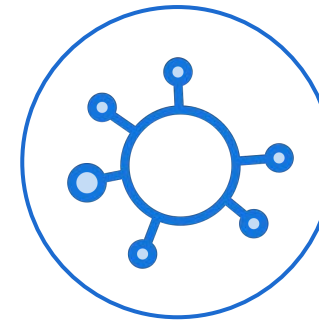
Collect

Capture critical information to achieve situational awareness



Account

Gain real-time visibility into the safety and status of your personnel



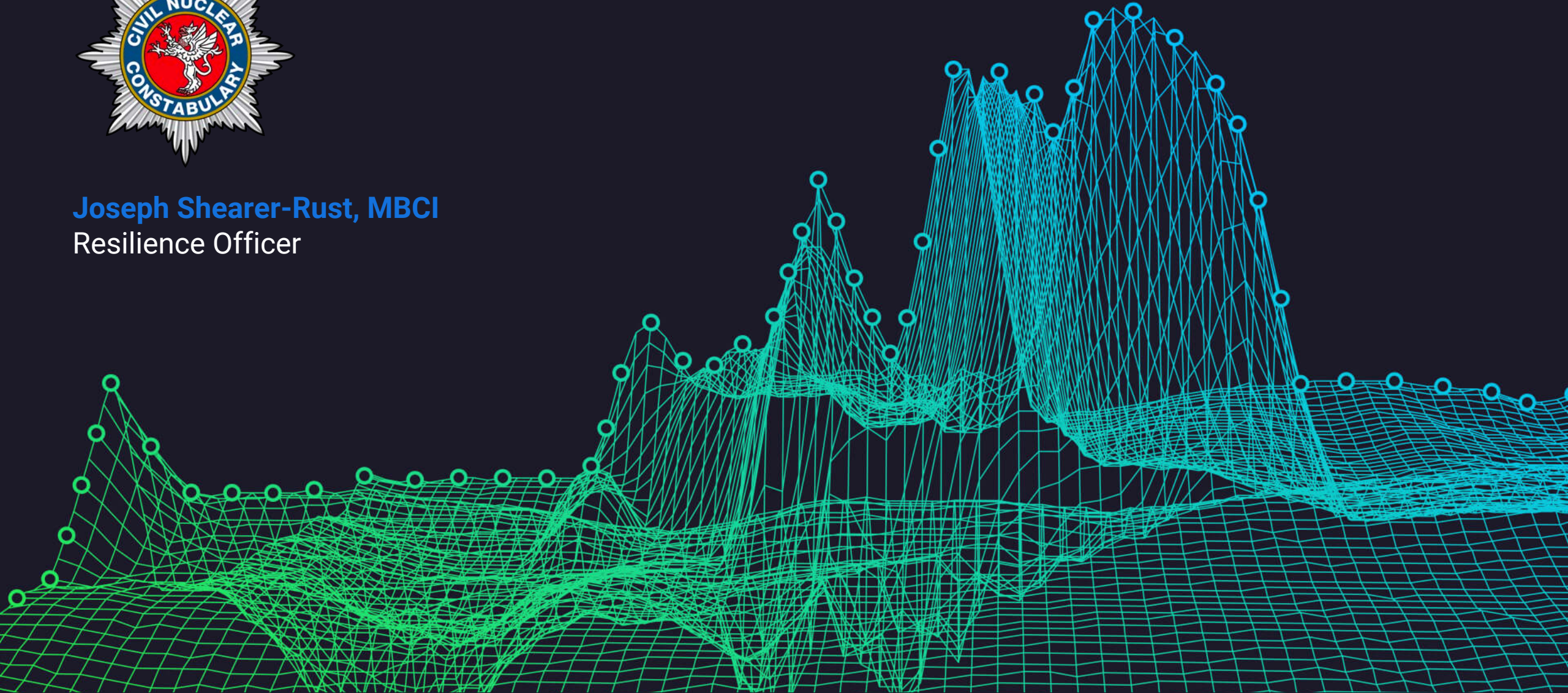
Connect









Inter-agency critical communications

Secure | Unified | Flexible



Joseph Shearer-Rust, MBCI
Resilience Officer





Major
Incidents

Human
Resources

Information
Technology



BlackBerry AtHoc



Internal
Communication

Inter Agency
Communication



Business
Continuity

BlackBerry AtHoc: Real Customer Usage



Terror Attack

BlackBerry, major global media company, major defense organizations, activated **personnel accountability** event to obtain real-time safety status of workers and travelers in London (and previous attacks in Paris and Brussels)



Cyber Security Breach

G8 Government was victim of cyber attack and **reduced time** of sharing critical information **from 90 minutes to less than 90 seconds**



Communication Outage

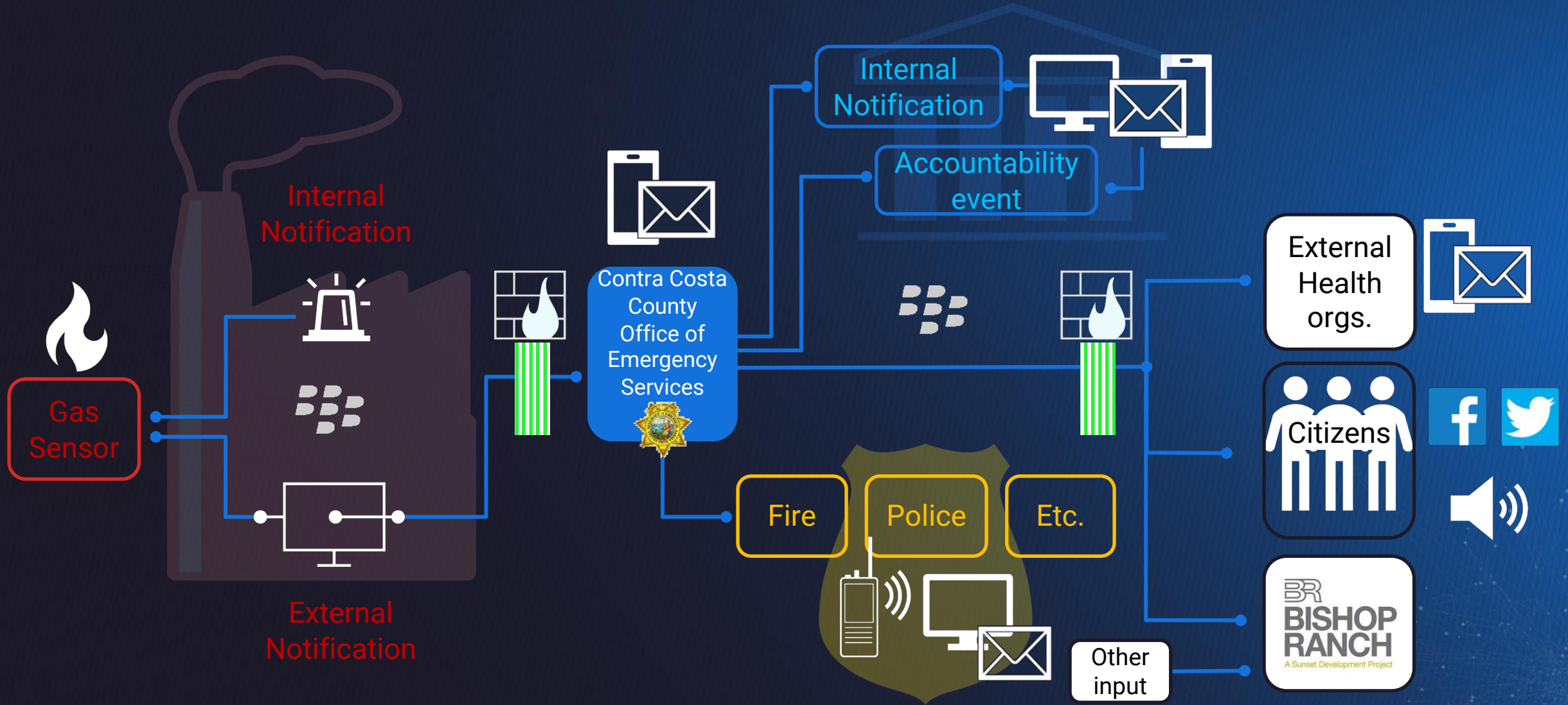
Major manufacturer's typical communication channels went offline; **integration with non-IP mass communication devices** were activated



Severe Weather

City building inspectors created **situational awareness via rich media** communication of damaged buildings post Mexico earthquake

Why BlackBerry



Why BlackBerry? Why Now?



PACKAGING

- Competitive Pricing -
- Public Safety -
- Enterprise -



PROGRAMS

- Blue Light -
- Healthcare -
- SLED -



PARTNERS

- Amazon Web Services -
- Microsoft Azure -
- Dedrone -



INVESTMENT

- Infrastructure -
- Product -
- People -

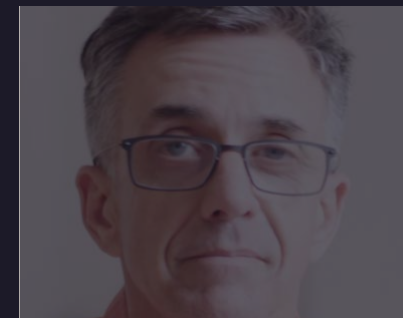
Broadening Our Reach

Analyst 2020 Summit

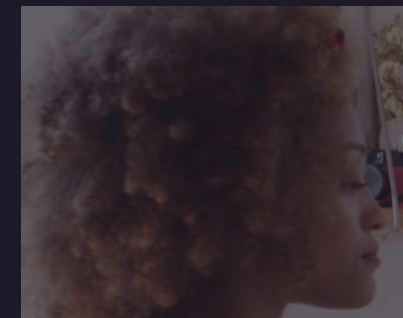
Protecting Things

John Wall

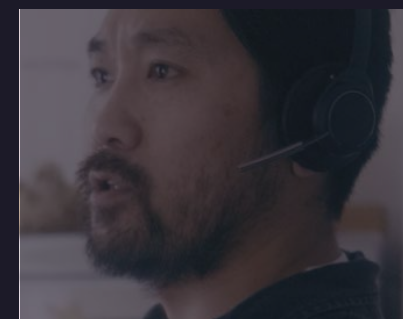
Senior Vice President, Head of BTS
Operations



Endpoint Security



Endpoint Management



Crisis Communication



Embedded Systems

150M+ MILLION CARS ON THE ROAD

45+ AUTOMAKERS

270+ MAKES & MODELS

7 of 7 TOP TIER1s USE BLACKBERRY QNX

9 of 10 AUTOMAKERS USE BLACKBERRY QNX

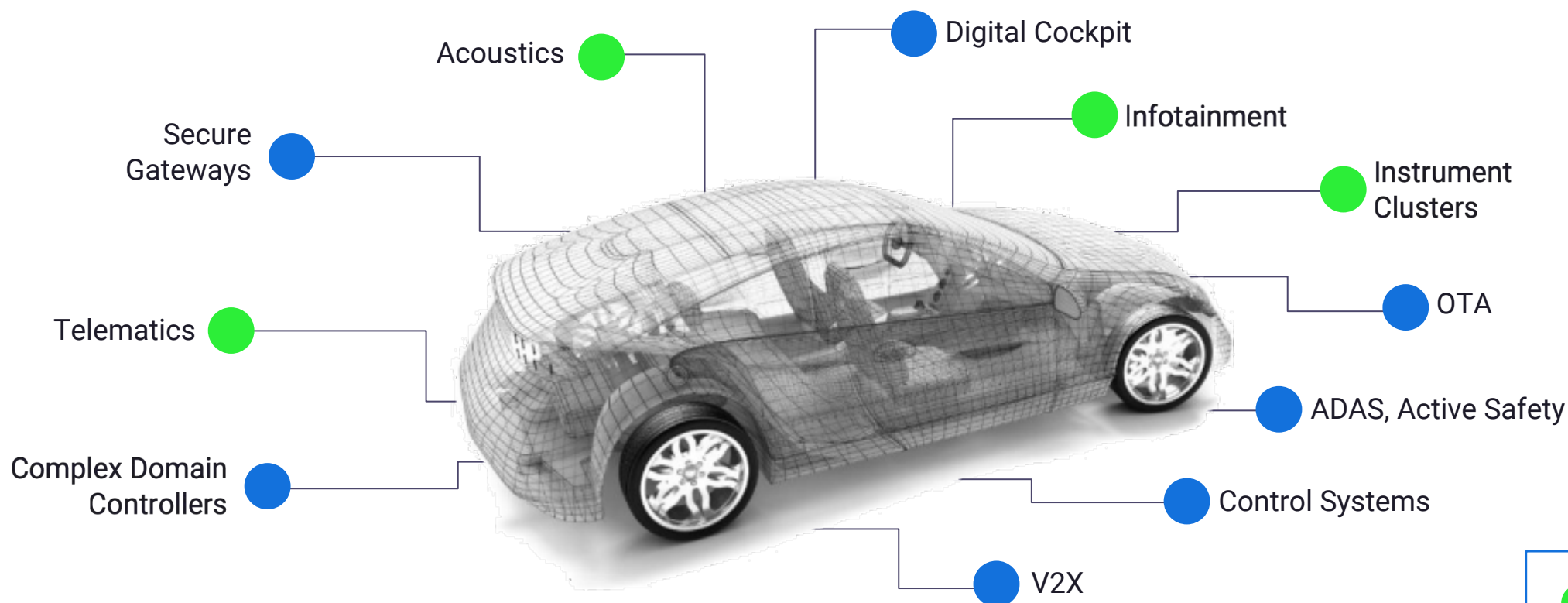
100% START OF PRODUCTION SUCCESS RATE

Software Trends in Automotive

Safety – Security – Trust



OTA, Jarvis
Connected Services



Secure Lifecycle Management

- Traditional
- Growth

Growing Demand for Secure and Safety Certified Products



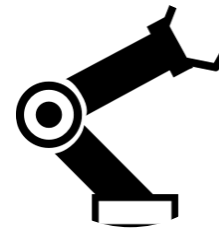
Control systems in
autonomous vehicles



High-speed rail



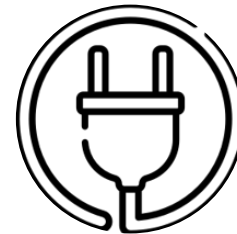
Safety &
ADAS systems



Factory automation
& industrial control



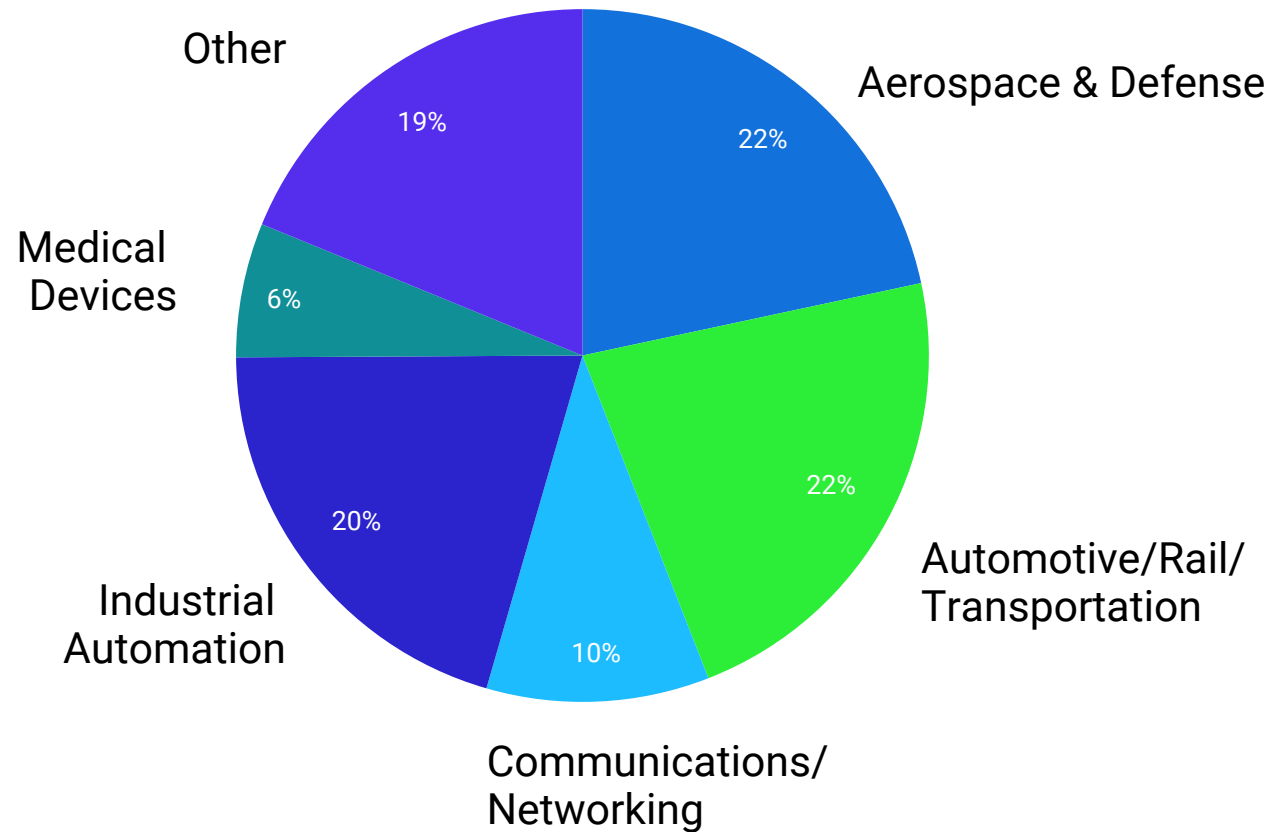
Digital & hybrid
instrument clusters



Energy generation

Embedded Software Market - 2019

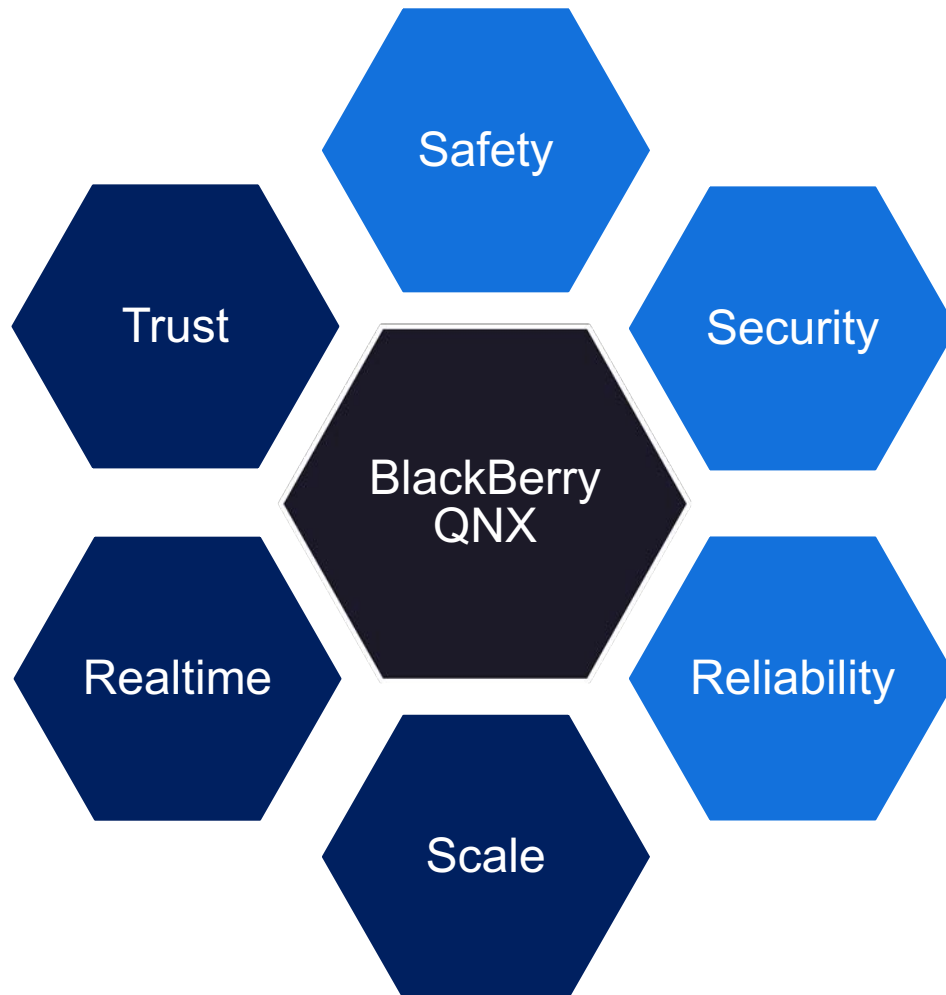
Vertical Split



- Microsoft share predicted to drop faster than previously forecast
- Commercial Linux shrinking while RTOS growing
- BTS-QNX SAM as percent of TAM is much higher in Medical than in the A&D vertical

Data from VDC Research

Why We Win – Foundational Value



Safety

- Broadest safety certified software portfolio
- Significant ongoing investment in safety roadmap
- Safety certified custom engineering and training

Security

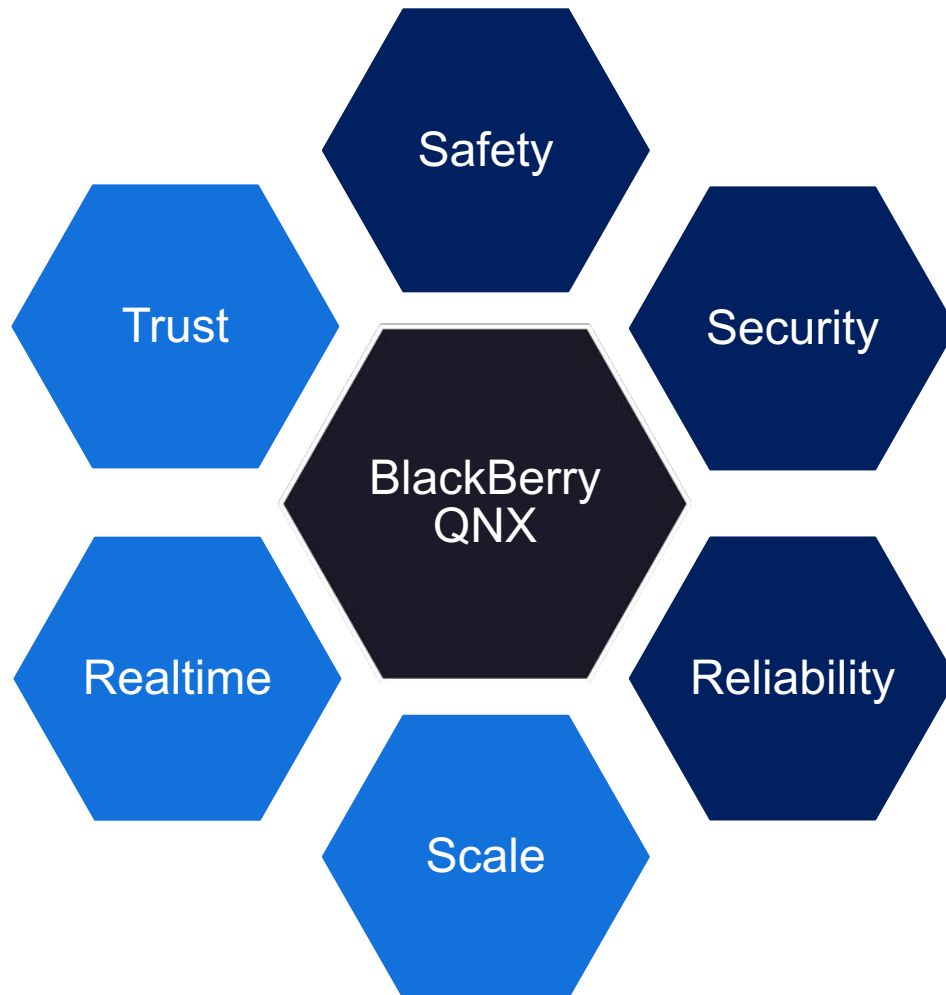
- BlackBerry / QNX brand value and reputation
- BlackBerry / QNX embedded security technology
- BlackBerry / QNX security services

Reliability

- Decades of proven reliability in mission critical systems
- Proven microkernel system architecture
- Trusted people and proven long term customer support

Note: These attributes and associated value apply equally to segments within GEM and Automotive markets

Why We Win – Foundational Value



Scale

- Scalable product licensing and business models
- Deeply embedded to high-end complex system pedigree
- Linux compatibility to leverage talent and technology

Realtime

- Decades of success powering real-time critical systems
- Realtime OS pedigree and adherence to standards
- Best in class system performance and analysis tools

Trust

- Trusted to deliver on commitments (100% SOP success)
- Impeccable reputation for world's best engineering talent
- Mission - Life - Safety - Critical device foundation

Note: These attributes and associated value apply equally to segments within GEM and Automotive markets

Secure & Safety Certified Software Portfolio



Beachhead Strategy for Products and Services

1. New Value-Add Embedded Products
 - Deliver new value-add products that build on our proven Foundational Products to meet customers' needs to increase our stickiness and revenue
2. New Value-Add Connected Services Products
 - Augment the portfolio to include new Connected Services Products: Lifecycle endpoint management leveraging BlackBerry's extensive portfolio.
3. Expand Professional Services
 - Scale and expand the Engineering Services portfolio globally building on our existing trusted and proven Engineering Services to increase stickiness and revenue
4. New Synergistic Market Segments
 - Enter new synergistic market segments (e.g. A&D) leveraging our value proposition, product and services portfolio and channel reach with an initial focus on awareness and early customer wins





Victor Salmons

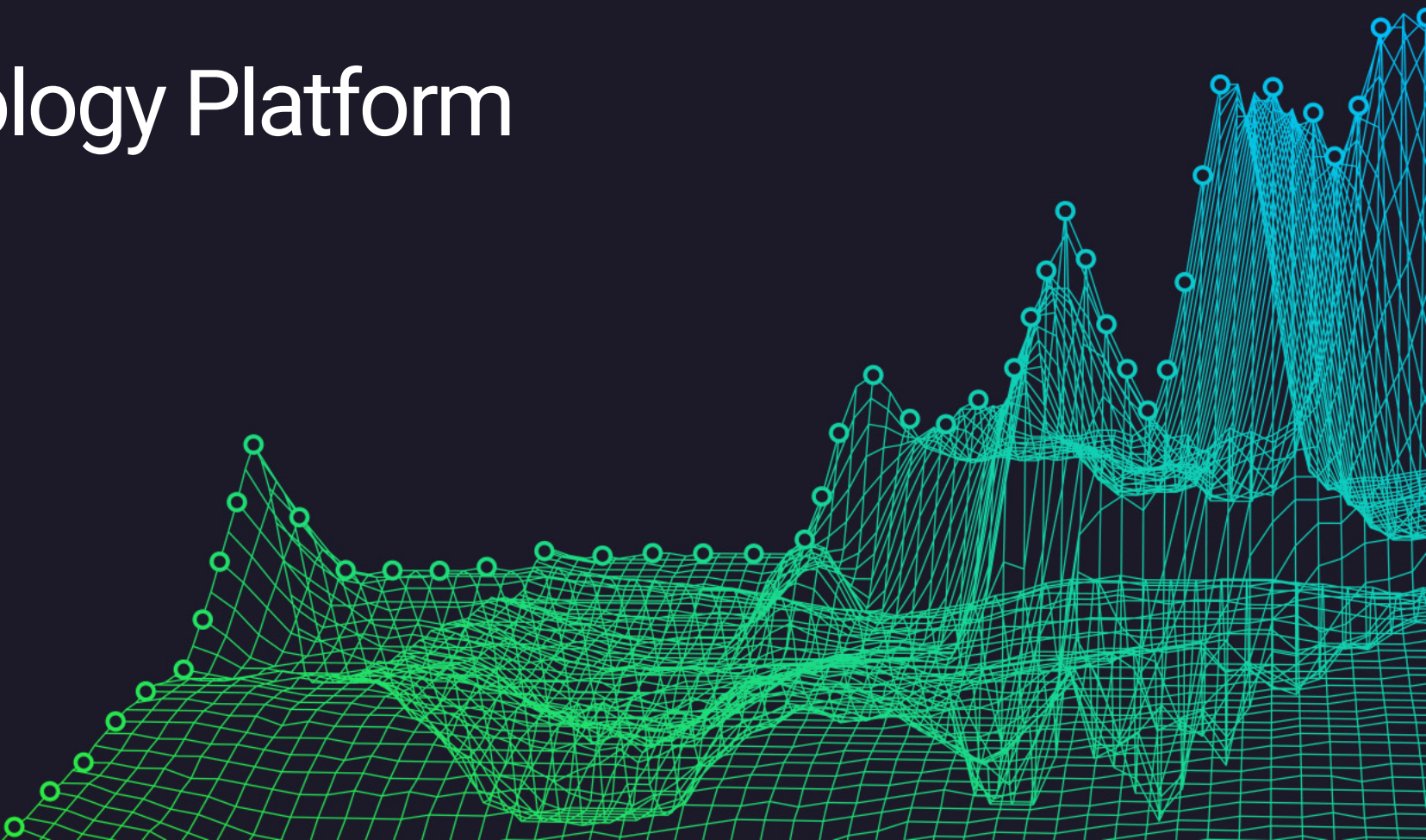
Vice President Engineering,
Speciality Printers

Analyst 2020 Summit

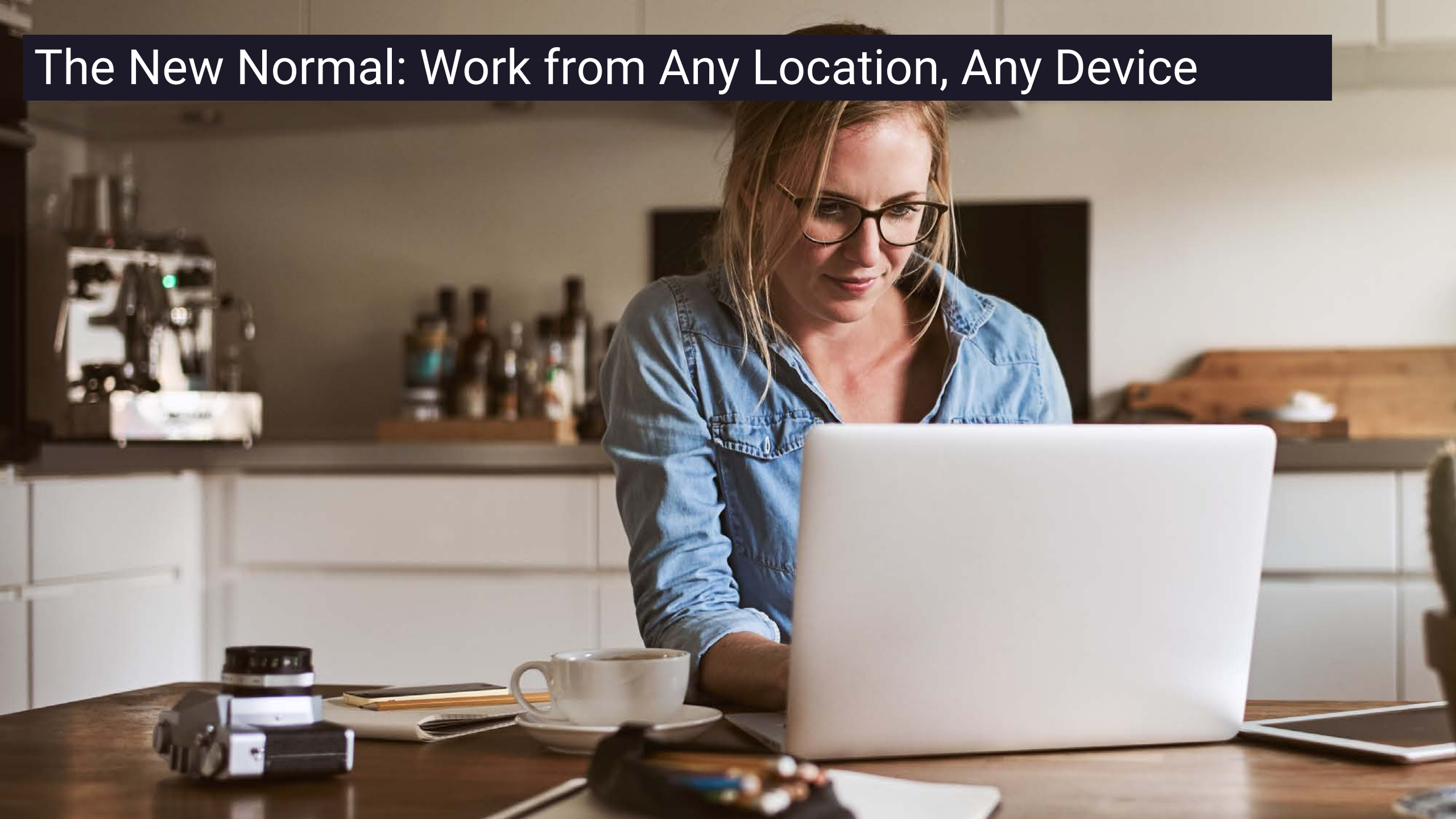
BlackBerry Technology Platform

Eric Cornelius

Chief Product Architect



The New Normal: Work from Any Location, Any Device

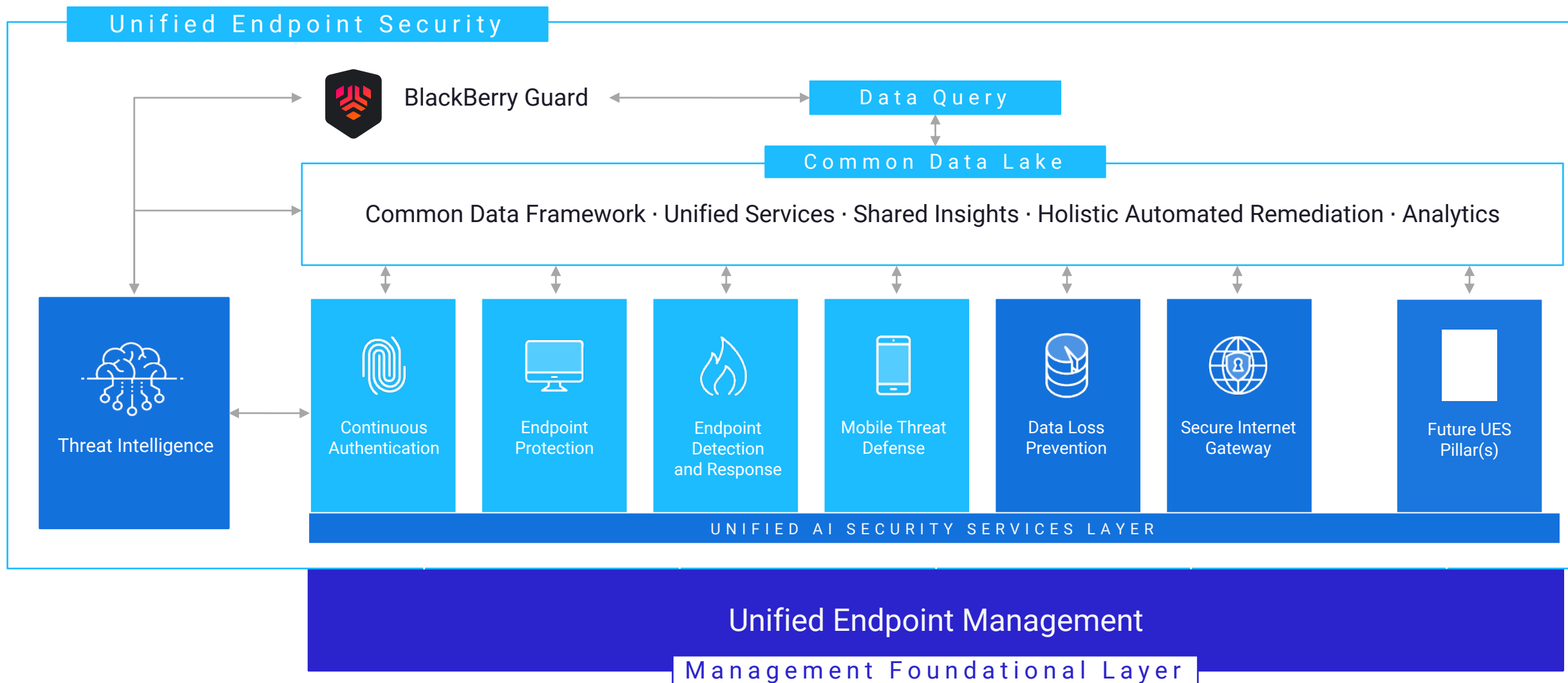


Explosion of Interconnected Devices

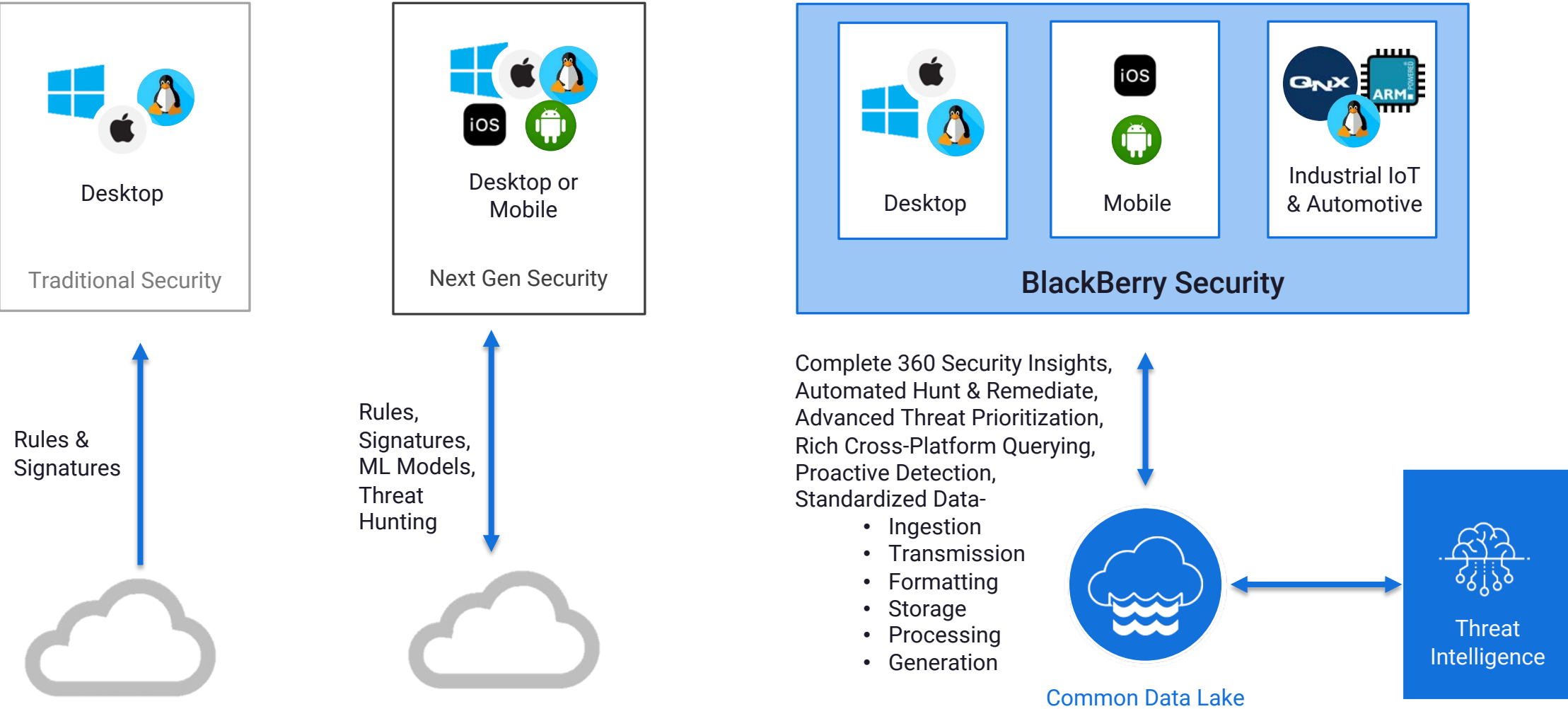


BlackBerry Spark UES – Crowd Sourced Data

Leverage the rich data access across the BlackBerry security portfolio to bring unified services, analytics, and holistic automated remediation by using a common data framework and shared insights amongst all products.

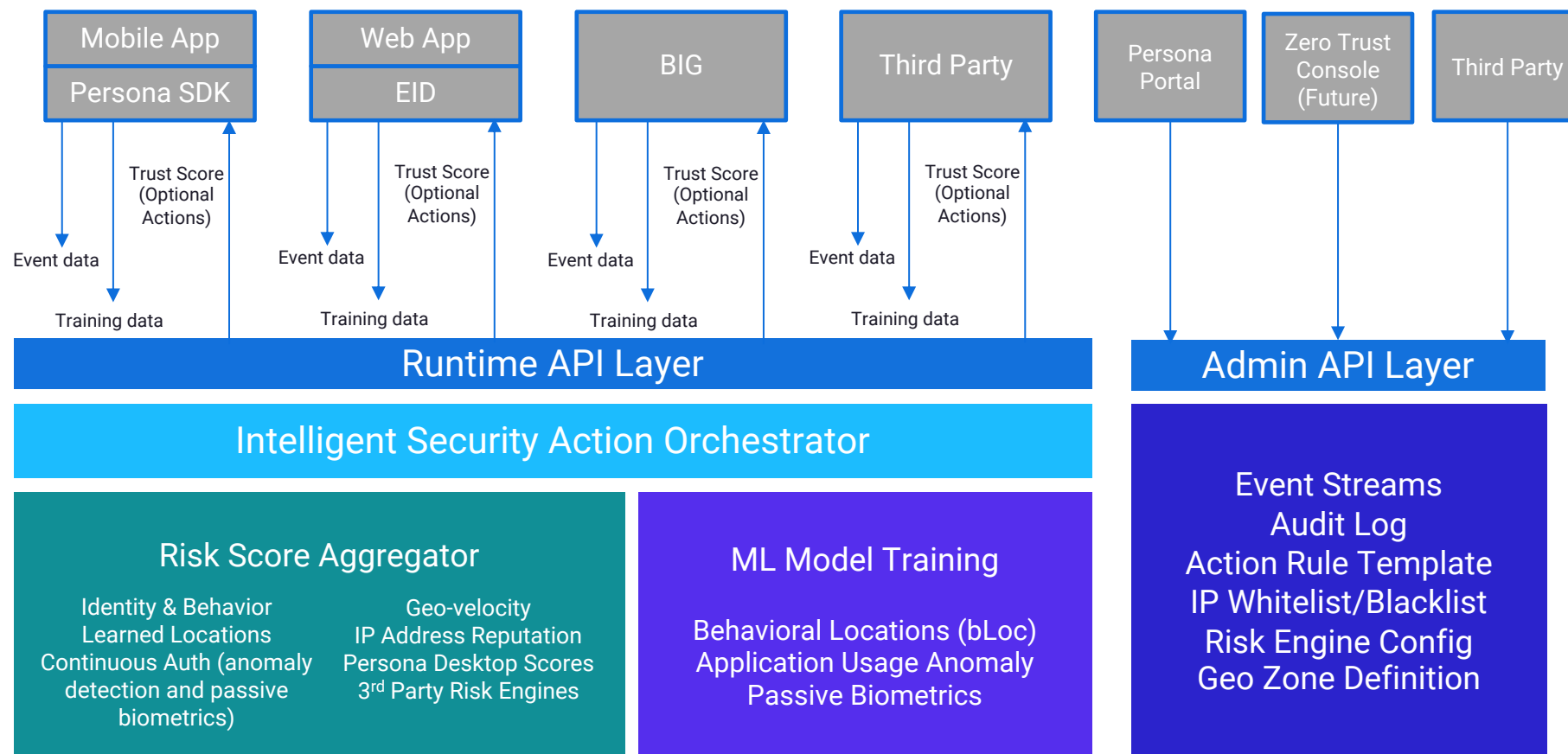


BlackBerry Data for Intelligent Action



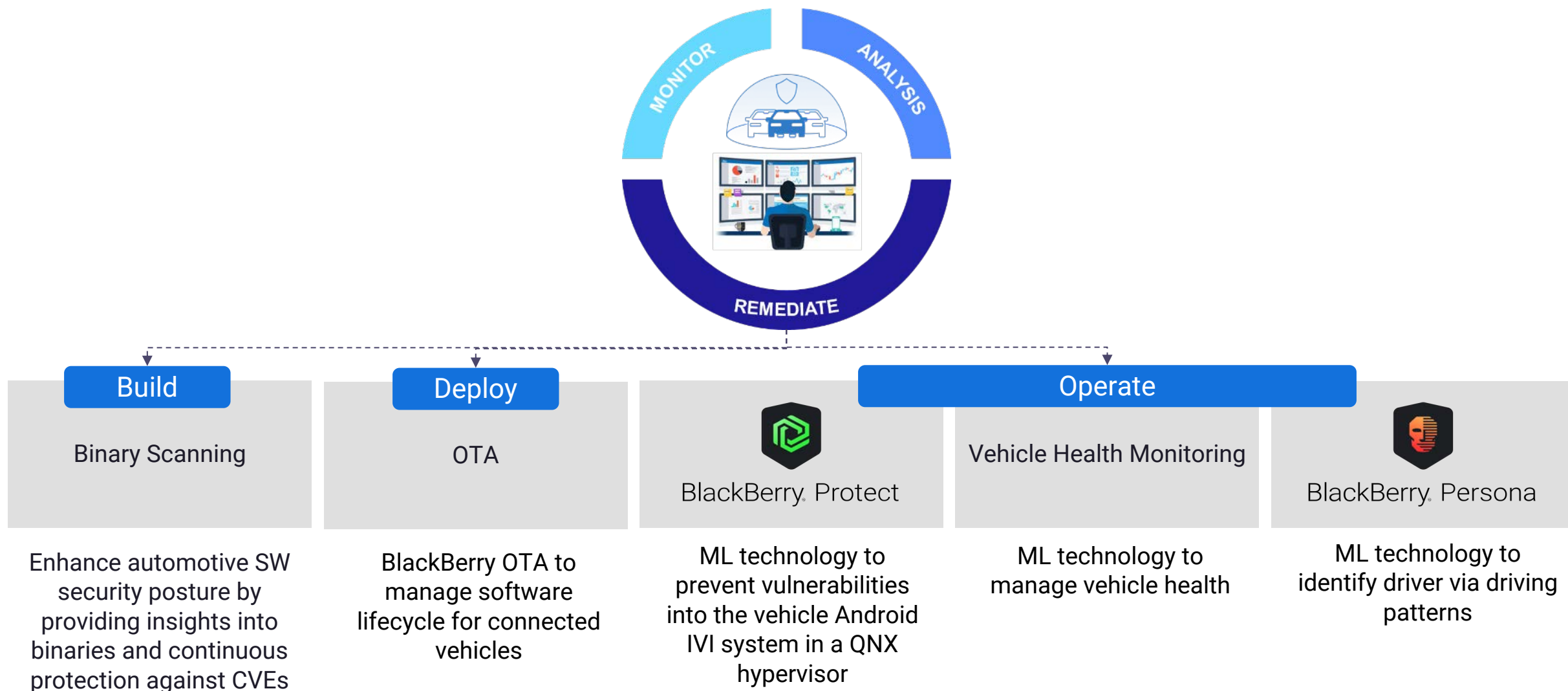
Zero Trust/Zero Touch Vision

- Expand BlackBerry Persona platform across BlackBerry Spark portfolio
- Open BlackBerry Persona platform to third parties
- Leverage context correlation for generating risk score to improve Zero Touch user experience



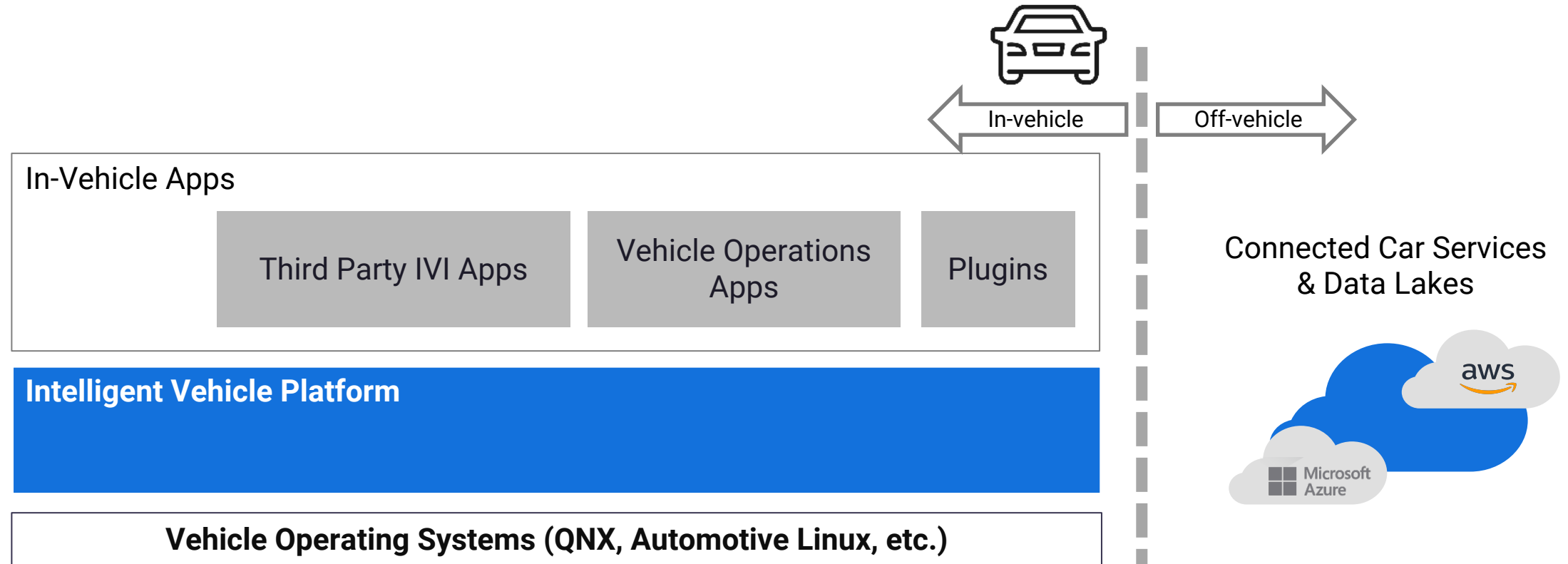
Applying AI to Automotive

Concept framework concept at CES showing software management & cybersecurity across the vehicle fleet.



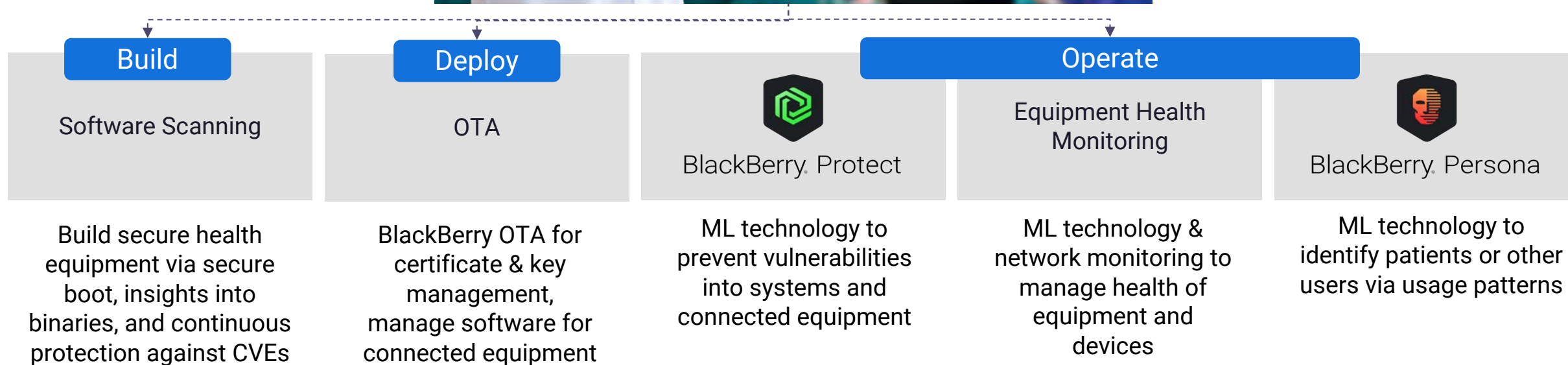
Applying AI to Automotive

Next: An intelligent vehicle platform to develop, deploy, and manage a new generation of in-vehicle services.



Applying AI to Healthcare

New concept under evaluation: Extensibility of software management & cybersecurity for healthcare deployments.
Combination of new technologies and services.

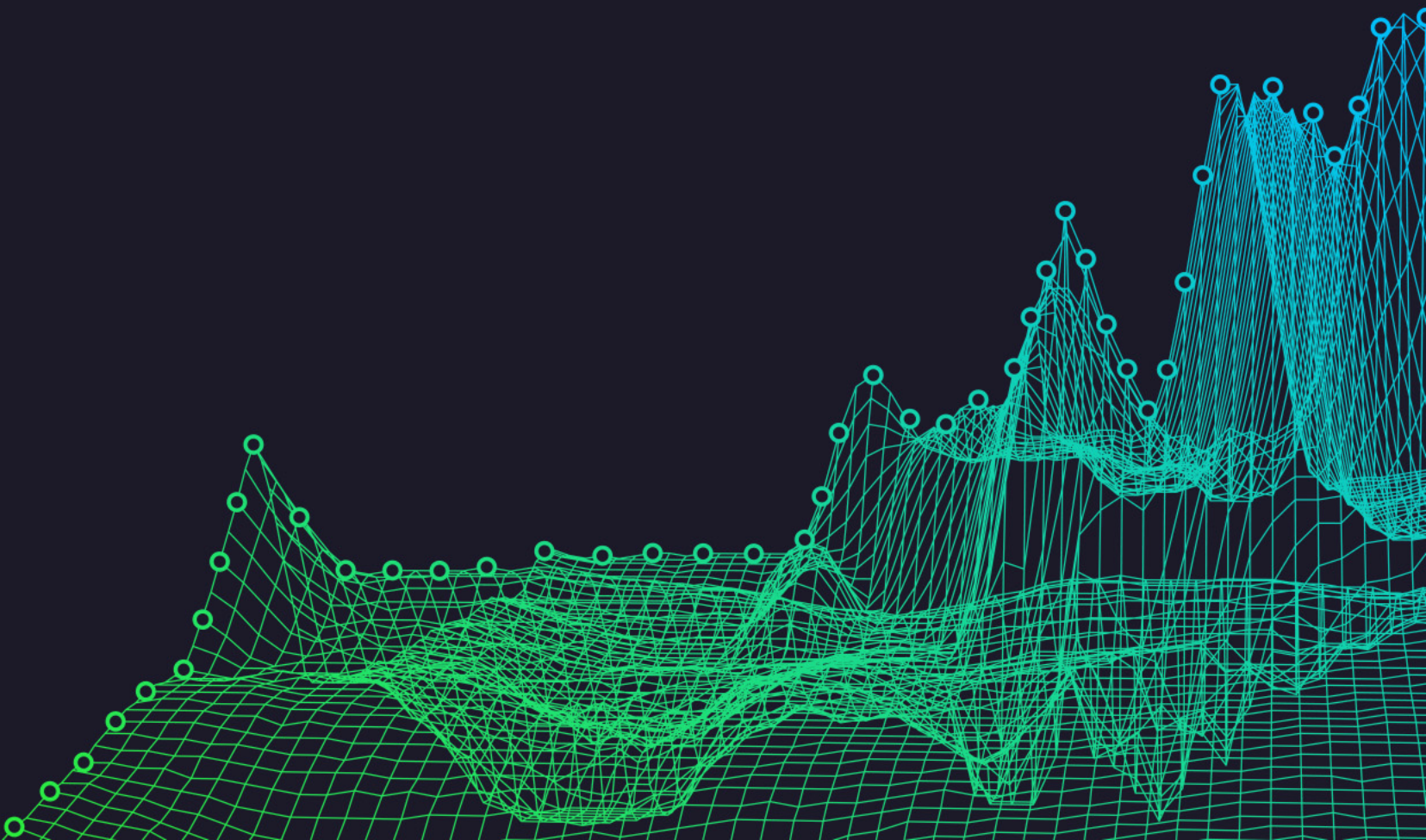


Analyst 2020 Summit

Go-To-Market

David Castignola

Head of BlackBerry Spark Field
Operations & Marketing





CUSTOMER GOAL

**Reduce Risk & Improve Security
Posture to Enable the Business**



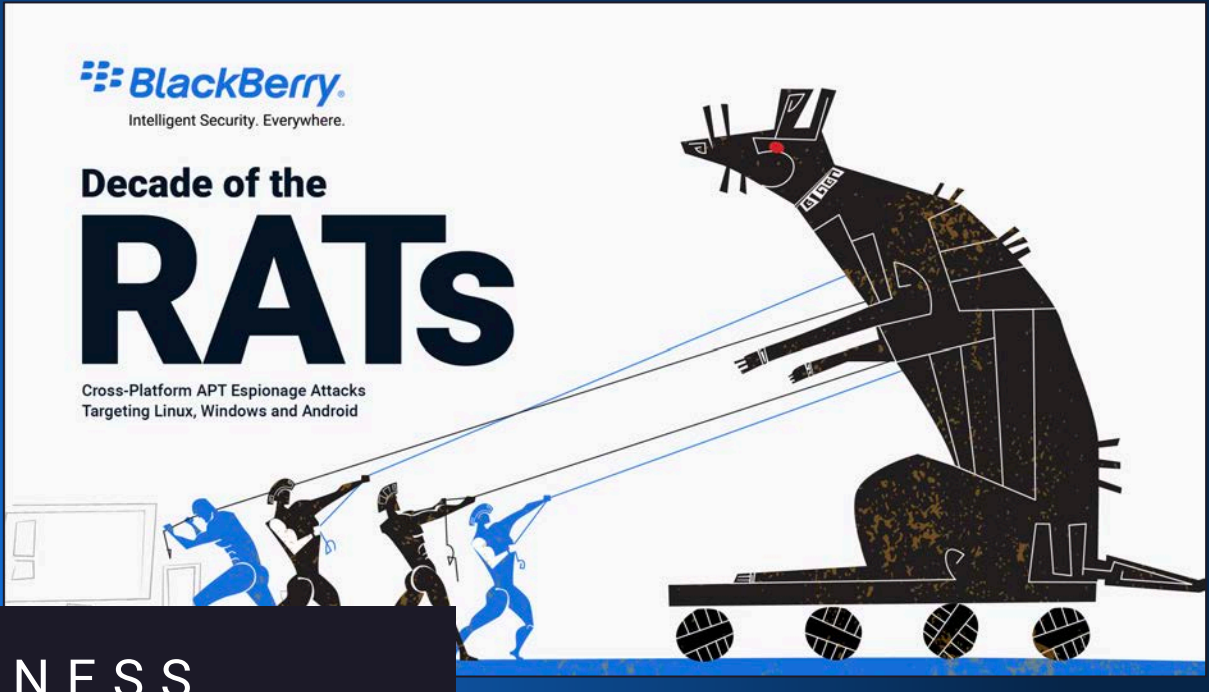
TOP PRIORITIES

- 1. Rationalize & Optimize**
- 2. Drive Productivity**
- 3. Business Continuity/Secure WFH**

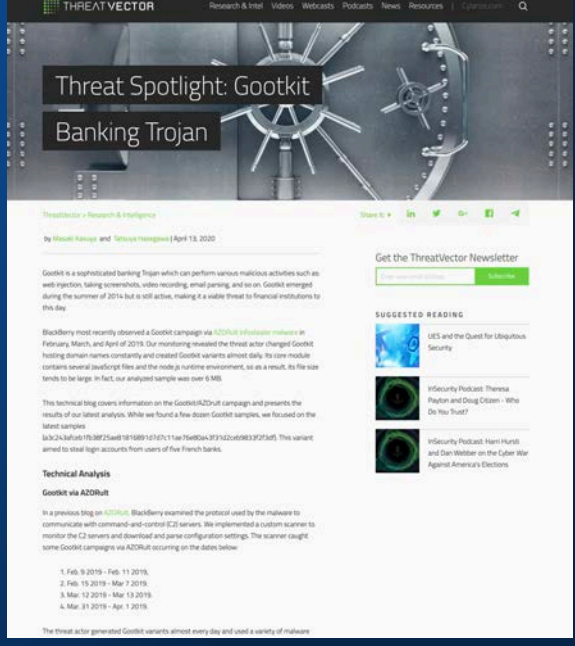
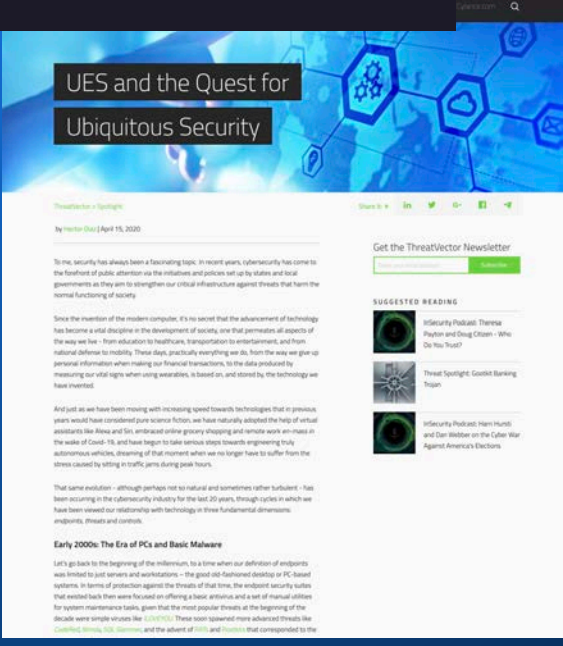
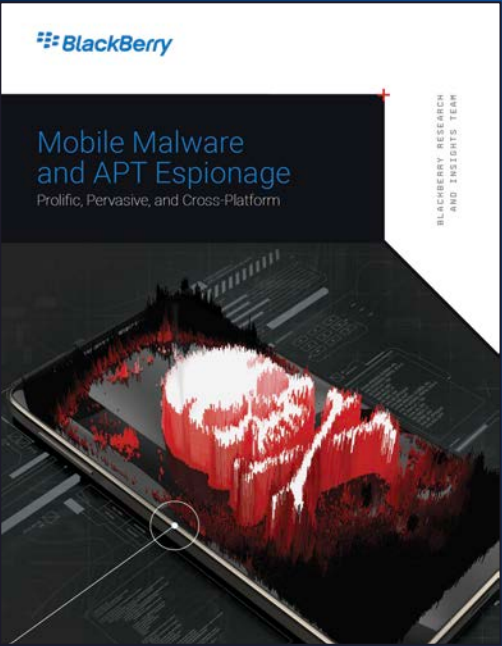
A red dart with a glowing impact point is hitting the bullseye of a target. The target has concentric rings and some numbers like 100, 200, 300 are visible. The background is dark and moody.

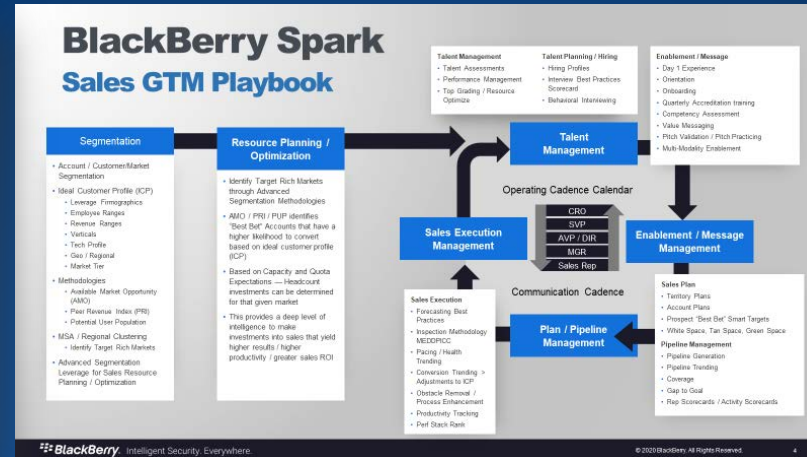
PLAN FOR GROWTH

1. Awareness
2. Execution



AWARENESS





EXECUTION

Unified Sales Organization
Unified Distribution & Channel
Management Operating Rhythm

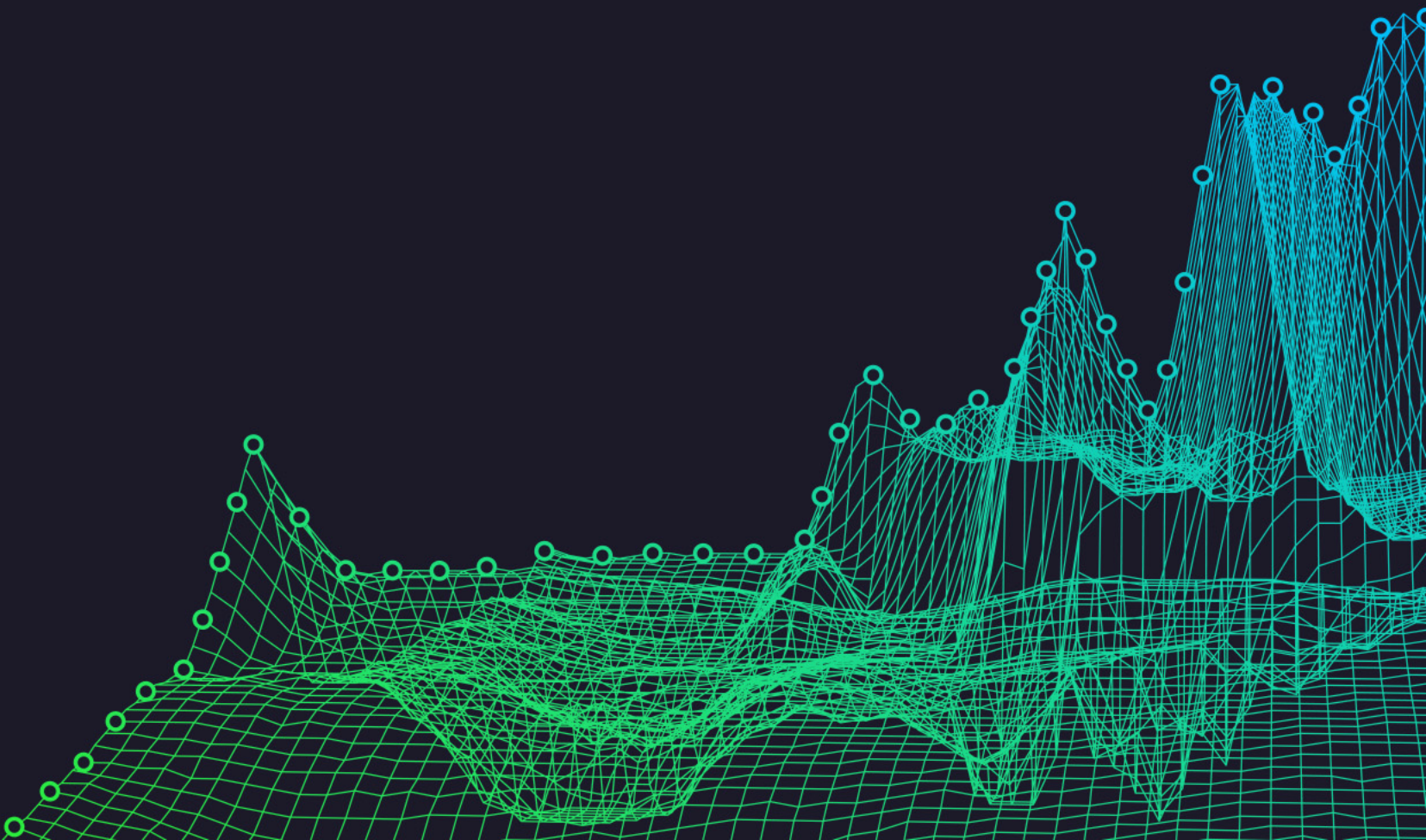


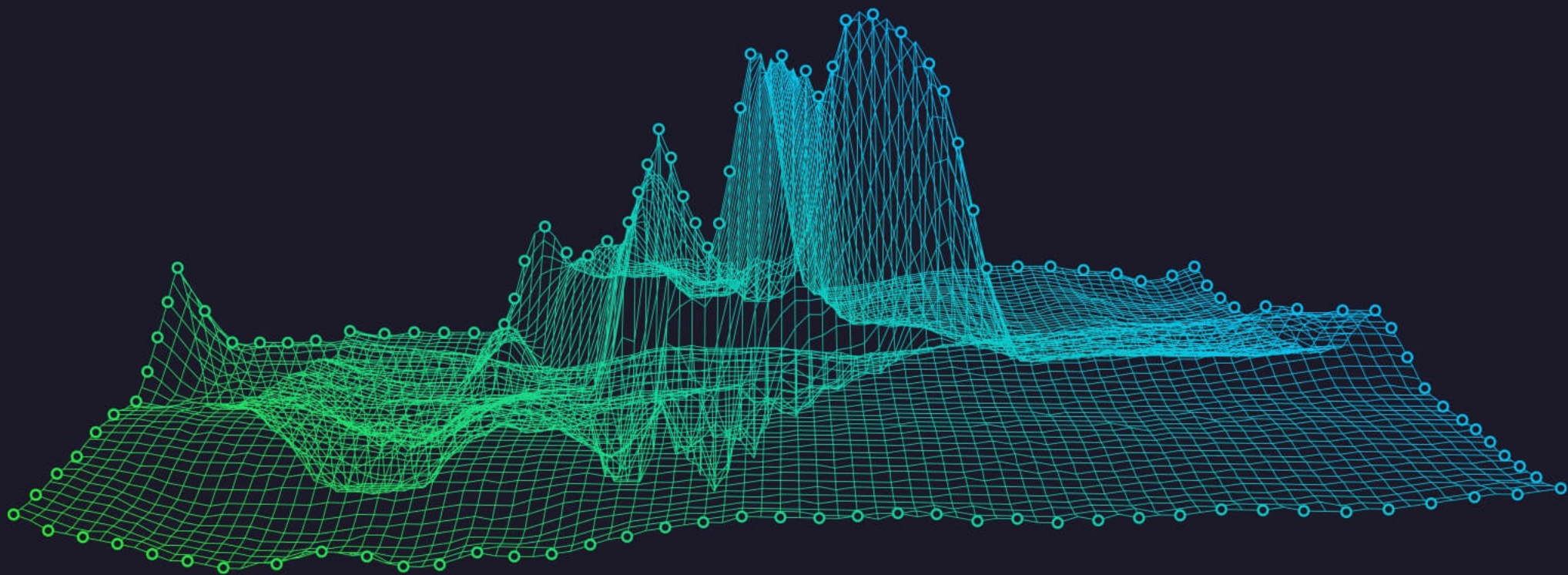
Analyst 2020 Summit

Closing Remarks

John Chen

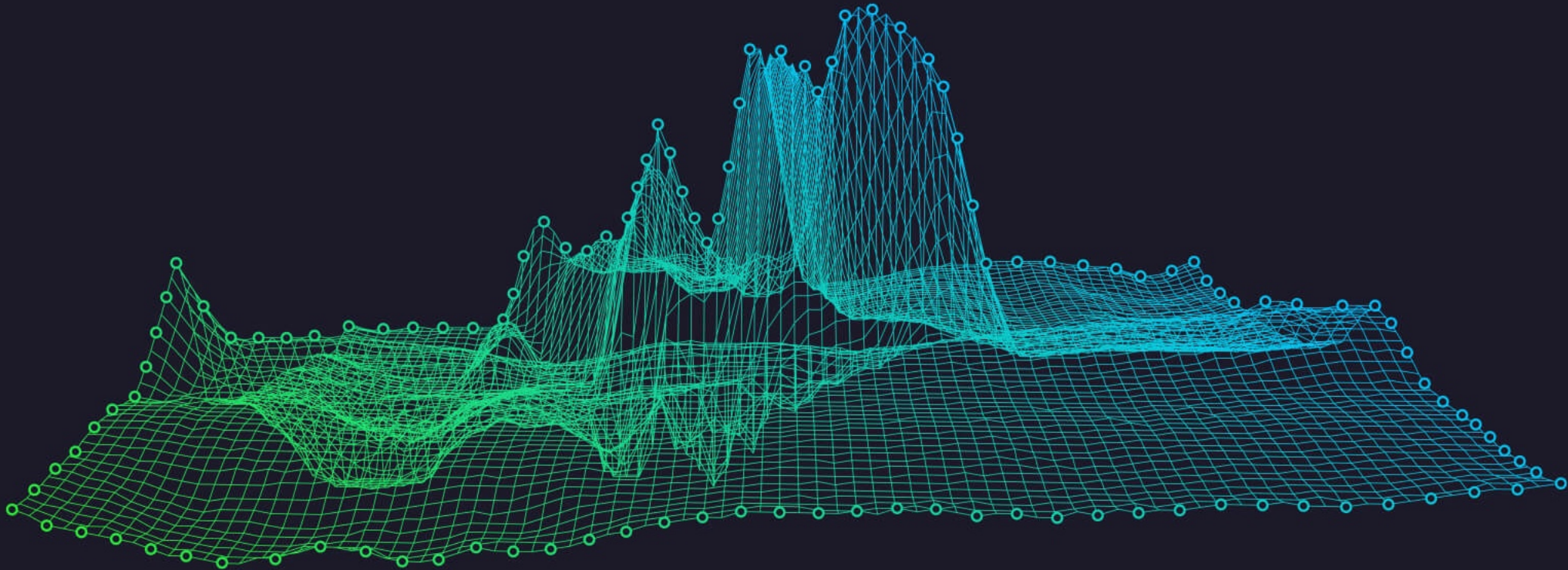
Executive Chairman & CEO





 **BlackBerry**® Intelligent Security. Everywhere.

THANK YOU!



We appreciate your feedback.
Please complete the survey on the next screen.