






BlackBerry Radar-M: Protect Your Valuable Cargo

Cargo and Environmental Sensors Help Maintain Cargo Integrity

Improve fleet utilization and productivity, maintain cargo integrity and maximize the ROI of fleet and cargo assets with Radar-M. Radar-M is best suited for dry trailers, refrigerated/heated trailers and intermodal and container fleets.

Industry-Leading Visibility into Fleet Assets

Seven device sensors that allow for event-driven alerts

- 
Location:
Track assets when in motion or stationary and with customized geofencing. Drivers can find fleet assets using their mobile phones.
- 
Cargo:
Detect the load status of your trailer or container.
- 
Temperature + Pressure + Humidity:
Monitor the conditions inside the container and remain in compliance with perishable product regulations such as US FSMA, or manage sensitive cargo, such as pharmaceuticals.
- 
Door Events:
Monitor the open/close status of your trailer and container doors.
- 
Motion Detection:
Know when your asset is on the move or in/out of a geofence.

Powerful Interactive Reports and Alerts

The Radar-M cloud-based platform presents the user with simple-to-understand and powerful interactive reports designed specifically for managing mobile transportation assets.

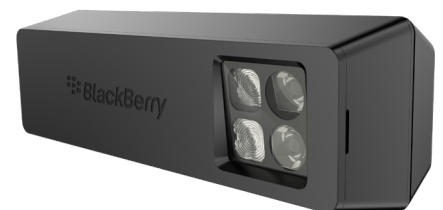
Users can receive event-driven alerts that can be triggered by the sensor data or activity within geofences.

Industry-leading Frequency of Data Collection

Sensor readings taken every 5 minutes can be uploaded in groups to the secure cloud platform at an interval of every 15 minutes or more, as configured by the user.

State-of-the-art Multi-year Battery

Radar-M's best-in-class visibility is powered by a replaceable high-performance battery that has a life span of 7+ years.



If you have any questions regarding BlackBerry Radar:

Email: radar@blackberry.com
Learn more at: www.blackberry.com/radar

BlackBerry Radar-M: Protect Your Valuable Cargo

Key Features of Radar-M

-  Suite of 7 sensors
-  7+ years battery life
-  Global network connectivity
-  Easy installation and no wiring
-  5-minute data collection rate
-  Ruggedized device

Standard Radar Solution Features

- End-to-end solution (device, software and cloud platform)
- 10-minute device installation
- Wireless installation
- Map-based UI and geofencing
- Automated yard check
- Mobile App (locate asset)
- Asset utilization reporting
- Dwell and detention reporting
- 2-year data storage
- Miles driven
- Asset timeline view
- Instant alerts
- Cellular data plan
- Live mapping
- Fully hosted 24/7/365
- Best-in-class security technology
 - o Secure data management
 - o Secure cloud-based over-the-air software updates
- Excellent value for data and services

Technical Specifications

Communications

- UMTS: Bands 1, 2, 5, 6, 8 HSDPA cat 8, HSUPA cat 6
- 800/850/900/1900/2100 MHz
- GSM/EDGE Bands 2, 3, 5, 8 multi-slot class 12
- 850/900/1800/1900 MHz

Location

GPS / GLONASS

Sensors

- Sensors hub for movement and door opening and closing detection
- Temperature, pressure and humidity sensors to monitor the conditions inside the container
- Cargo load sensor to determine load status of container

Battery

High Capacity Non Rechargeable Primary Battery operating at 7.2V

Physical

- Two pieces solution with battery and sensors inside and external module with the antenna and radios
- **Inside:** 290mm X 96mm X 53mm thick (11 27/64" x 3 25/32" x 2 3/32" thick)
 - **Outside:** 290mm X 96mm X 28mm thick (11 27/64" x 3 25/32" x 1 7/64" thick)
 - **Weight:** 1.3kg (2.9 lbs)

Environmental

- Operating Temperature -40 to +85°C (-40 to +185°F)
MIL STD – 810F
- Drop
 - Shock
 - Humidity
 - Salt fog
 - Vibration
 - UV
- SAE J1455 – water spray
EN-60950-1:2006 - impact
IP 67 water & dust

Certifications

- Global Certification Forum (GCF)
PCS Type Certification Review Board (PTCRB)
Conformité Européene (CE)
Federal Communications Commission (FCC)
Industry Canada (IC)