

# BlackBerry UEM + Samsung Knox Comprehensive EMM Management



BlackBerry. UEM



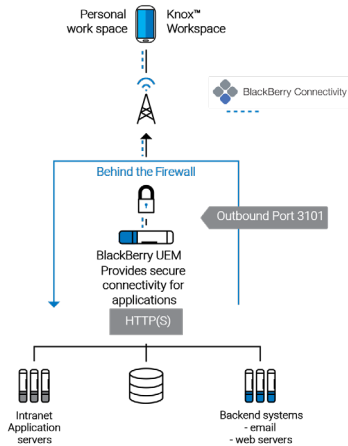
SAMSUNG Knox

Together, Samsung and BlackBerry secure and enable key enterprise workflows, from the boardroom to the battlefield, exceeding the demands of highly regulated industries and government organizations. With BlackBerry and Samsung, mobile users benefit from the latest in device technologies, while CIO's are assured their sensitive data is protected from internal and external threats, both in transit and at rest. BlackBerry has integrated the most Knox Management Policies and is the only EMM solution that provides all-inclusive Knox Platform for Enterprise licensing at no additional cost.

## BlackBerry UEM: Your command and control center for the secured enterprise

Manage enterprise mobility across iOS®, Android™, Windows Phone® and BlackBerry® with enhanced support for Samsung Knox™-enabled devices. Built on BlackBerry's trusted global network, BlackBerry® UEM makes managing enterprise mobility efficient and secure.

## SAMSUNG Knox



# Samsung Knox: Defense-grade security for Android

Satisfy enterprise security requirements without compromising business data or employee privacy. Samsung Knox brings an enhanced user experience and provides secure BYOD scenarios by delivering robust, hardware and software-integrated security for the Android platform.

BlackBerry UEM support for Samsung Knox Platform provides an integrated EMM solution that brings together secure connectivity with device, applications and data management to provide uncompromised corporate security and employee privacy.

## BlackBerry UEM + Samsung Knox

The combination of UEM and Samsung Knox Platform offers many benefits to the enterprise:

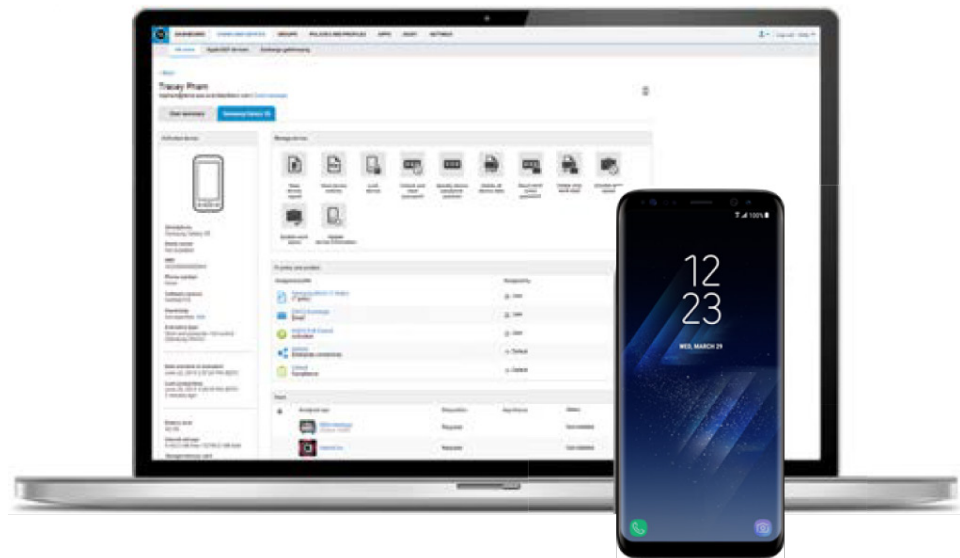
- ✓ [Defense-grade, end-to-end security](#) for Samsung® Galaxy devices.
- ✓ [No additional cost for Knox](#) with BlackBerry® Enterprise Mobility Suite, Collaboration Edition or higher.
- ✓ [Run BlackBerry Apps in Samsung Knox™ Workspace](#), to deliver an integrated experience for corporate apps
- ✓ [Flexibility for mixed deployment scenarios](#), supporting BYOD, COPE and COBO environments, and support for Knox Mobile Enrollment.
- ✓ [BlackBerry® Connectivity](#) to enhance security for data-in-transit and optimize the application experience in the Samsung Knox Workspace.

## Enhanced security

Samsung Knox Platform offers significant security enhancements to the core Android framework, and is unified with Android Enterprise. It protects device integrity, reduces threats that bypass application security mechanisms and minimizes damage from flawed applications. Samsung Knox Platform adds and modifies security mechanisms in each layer of the Android stack, from the hardware all the way to the application layer, without compromising Android compatibility. BlackBerry Connectivity and BlackBerry UEM ensure that work data is encrypted in transit and secured end-to-end.

## Reduced complexity

- ✓ BlackBerry UEM provides a unified management console designed to simplify IT administration.
- ✓ BlackBerry Connectivity provides a true IP network interface on the device, delivering high throughput and improving the experience for multi-media and streaming applications including voice and videos.
- ✓ End users benefit from a familiar and intuitive Android user experience for mobile work applications.



# Samsung Knox policies

	<b>Knox Platform for Enterprise (KPE) Standard</b> (Management/Enterprise Suites)	<b>Knox Platform for Enterprise (KPE) Premium</b> (Collaboration Suite & higher)
<b>Scenario</b>	<ul style="list-style-type: none"> <li>› Device-level MDM/MAM through a single platform</li> <li>› Multiple deployment Models (BYOD, COPE, COBO, COSU/Kiosk)</li> </ul>	<ul style="list-style-type: none"> <li>› Higher security requirements and/or regulated environments</li> </ul>
<b>Advantages</b>	<ul style="list-style-type: none"> <li>› Apply limited device-wide policies</li> <li>› BlackBerry UEM support for Samsung Enterprise FOTA (Firmware Over-the-Air) to manage software updates to Samsung devices</li> <li>› Support for Knox Attestation and Knox Mobile Enrollment</li> </ul>	<ul style="list-style-type: none"> <li>› BlackBerry Connectivity secures data in transit</li> <li>› Highest Knox Security option, device side encryption</li> <li>› Extensive policy support</li> <li>› Enable employees to work without a laptop via BlackBerry apps optimized for Samsung DeX</li> </ul>
<b>Enterprise Management</b>	<ul style="list-style-type: none"> <li>› Certificate management</li> <li>› Add email accounts</li> <li>› Device lock/unlock, retest/clear password</li> <li>› Enterprise data-wipe</li> <li>› Kiosk mode</li> <li>› BYOD, COPE, COBO support</li> </ul>	<ul style="list-style-type: none"> <li>› TIMA Client Certificate Management</li> <li>› Email account configuration</li> <li>› ODE-trusted boot verification</li> <li>› VPN Authentication</li> <li>› Proxy server &amp; PAC support for Knox activation types</li> </ul>
<b>IT Policies</b>	<ul style="list-style-type: none"> <li>› Password enforcement</li> <li>› Tethering - Wi-Fi, USB, Bluetooth</li> <li>› Browser, roaming, mobile data, OTA settings</li> <li>› A/V recording, SD Card, NFC</li> <li>› Google auto-sync, send crash reports to Google</li> </ul>	<ul style="list-style-type: none"> <li>› SMS/MMS calling, logging</li> <li>› Container password, two factor authentication</li> <li>› Sync personal/work spaces</li> <li>› PIM import/export between personal and workspaces</li> <li>› Screen capture, non-secure keypad</li> <li>› PAC file support</li> <li>› Certificate revocation (CRL), OSCP check for apps</li> <li>› CIAP Common Criteria functionality</li> <li>› Content Share Policy allows IT admin to allow or disallow data sharing between Workspace and personal space</li> </ul>
<b>Application Management</b>	<ul style="list-style-type: none"> <li>› Support for Managed Google Play and related services, such as Play Protect and SafetyNet</li> </ul>	<ul style="list-style-type: none"> <li>› Support for BlackBerry® Dynamics™ apps (BlackBerry apps, ISV apps, and custom apps) within Knox Platform for Enterprise</li> <li>› Completely isolates business apps and data from personal apps</li> </ul>



## About BlackBerry

BlackBerry is an enterprise software and services company focused on securing and managing IoT endpoints. The company does this with BlackBerry Spark,<sup>™</sup> an end-to-end Enterprise of Things platform, comprised of its enterprise communication and collaboration software and safety-certified embedded solutions. Based in Waterloo, Ontario, the company was founded in 1984 and operates in North America, Europe, Asia, Australia, Middle East, Latin America and Africa. The Company trades under the ticker symbol “BB” on the Toronto Stock Exchange and New York Stock Exchange.

For more information, visit [www.BlackBerry.com](http://www.BlackBerry.com).